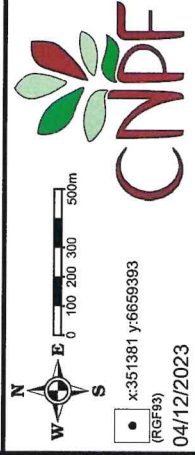
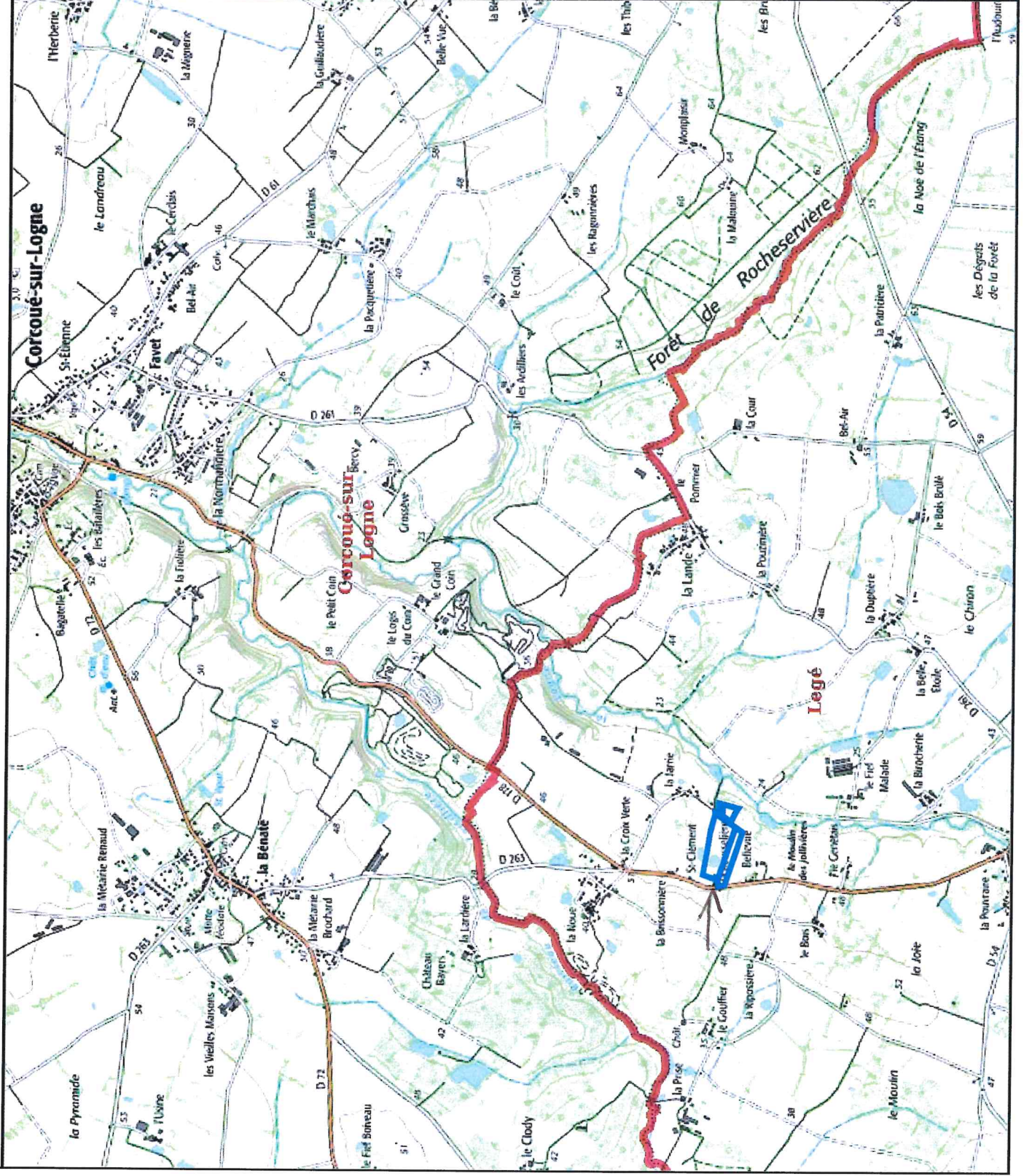


Annexe 3 - Plan de situation

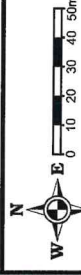


Sources : ©CNPF®©IGN®©INPN®
Réalisation : ©CNPF, servcarto.fop v1.4

Annexe 6 - Plan du projet



- Etang 0.1284 ha
- Arbres situés en zone humide 0.4075 ha
- Prairie humide 0.3248 ha
- Projet boisement chêne sessile 0.4028 ha
- Projet boisement cèdre/pin 2.5063 ha
- Cours d'eau 363.5540 m



x:350210 y:8658381
(RGF83)

04/12/2023

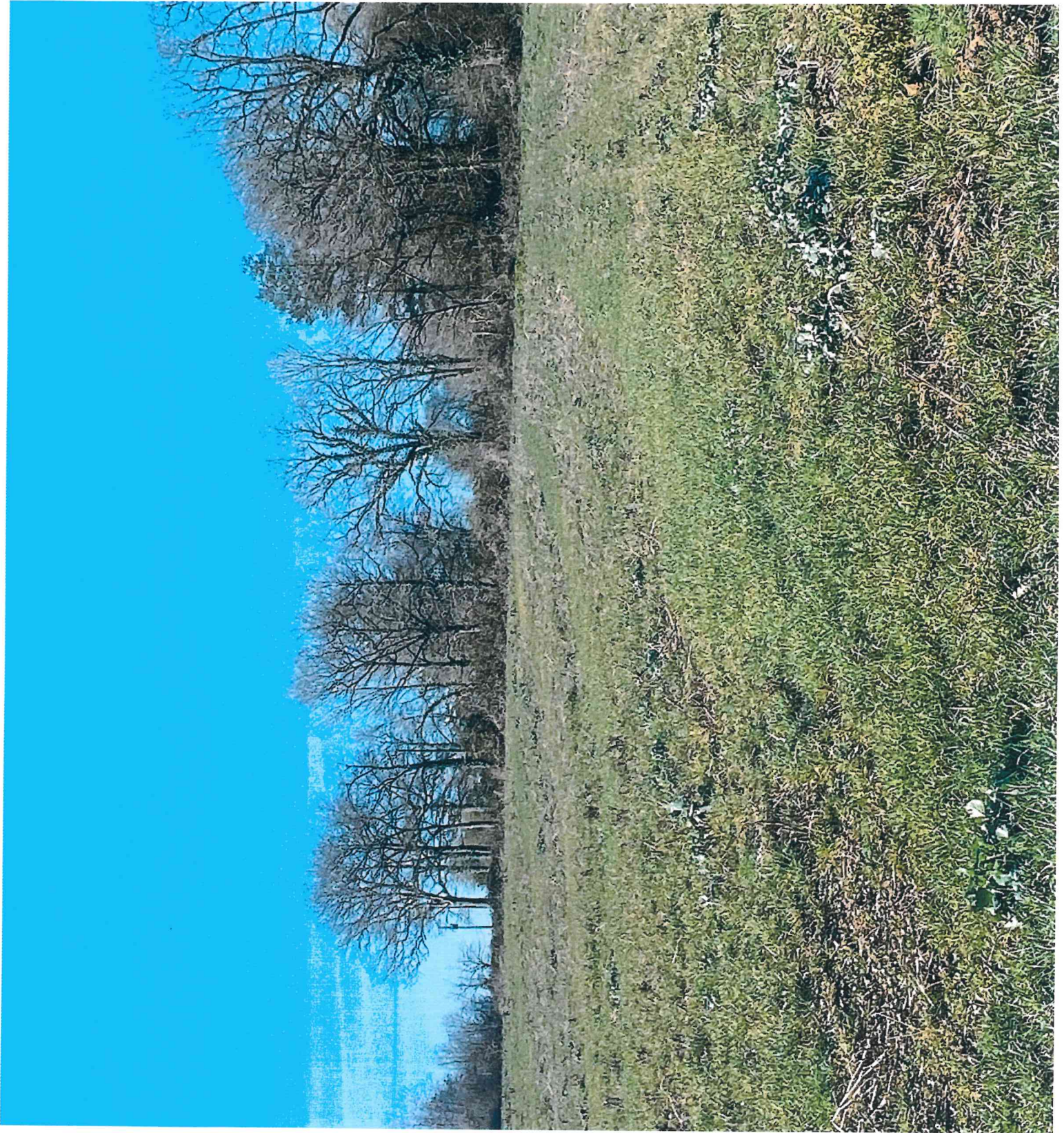
Sources : ©CNPF® ©IGN® ©INPN®
Réalisation : ©CNPF, servcarto.fop v1.4



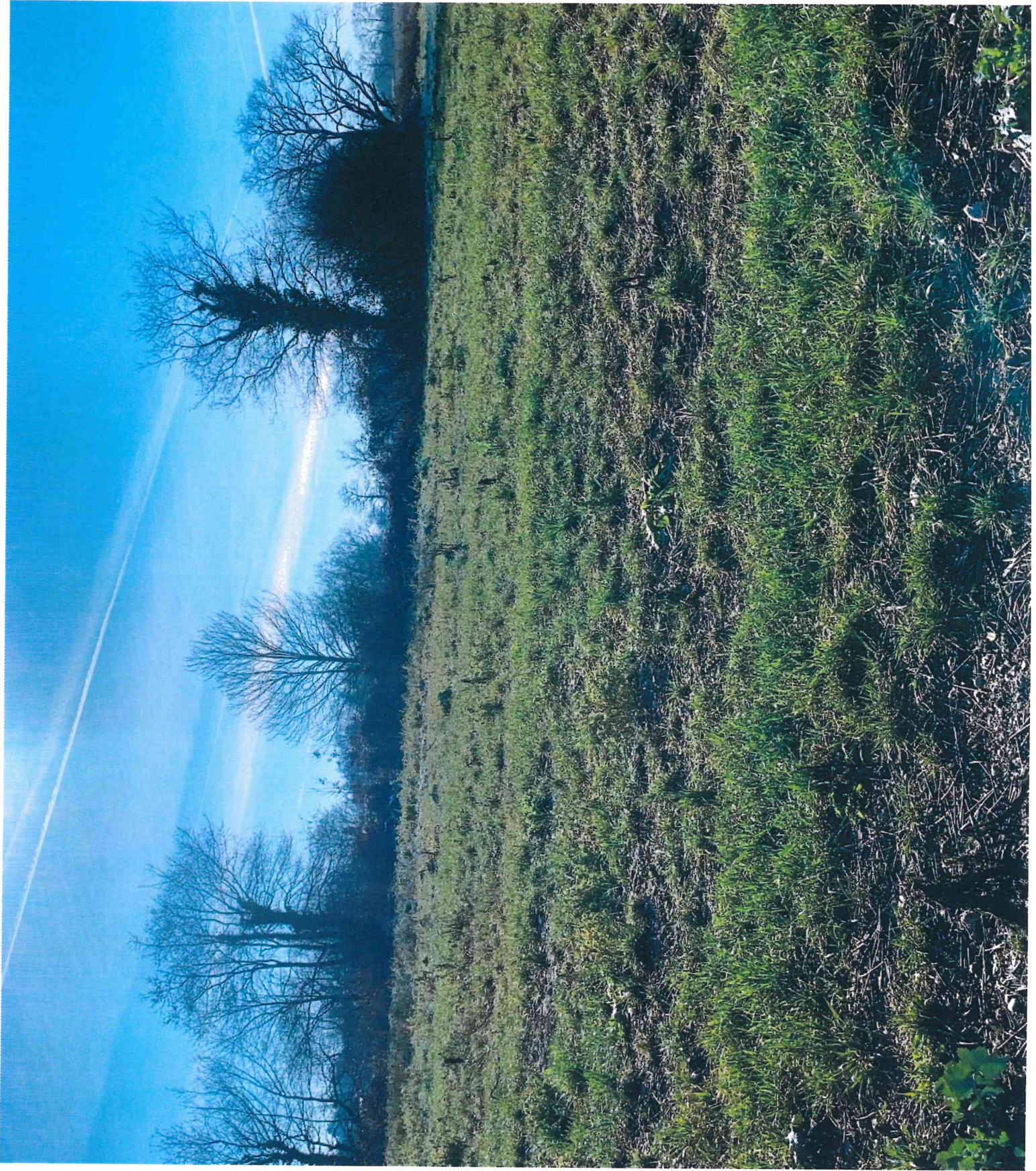
2



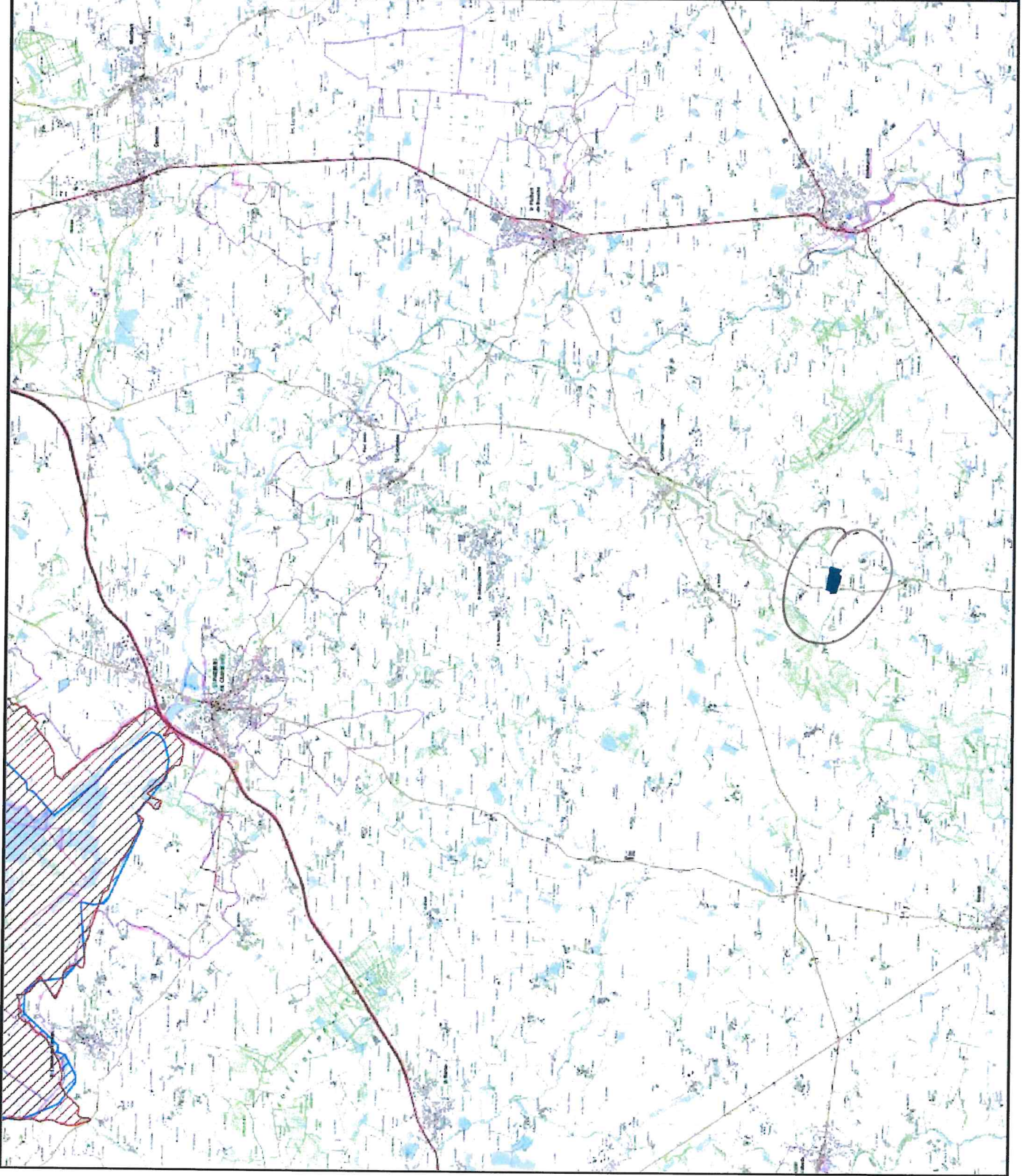
3



9




Annexe 7 - Projet boisement-Site natura 2000 le plus proche



Contour du projet sde boisement 4.1262 ha


NATU
RA
2000 -
Directi
ve
"Habit
als"
(ZSC)
NATURA 2000 - Directive "Oiseaux" (ZPS)




04/12/2023

Sources : ©CNPF® ©IGN® ©INPN®

Réalisation : ©CNPF, servcarto.fop v1.4



0 500 1000 1500 2500m



N
W E S

x:350015 y:666476
(RGF93)

