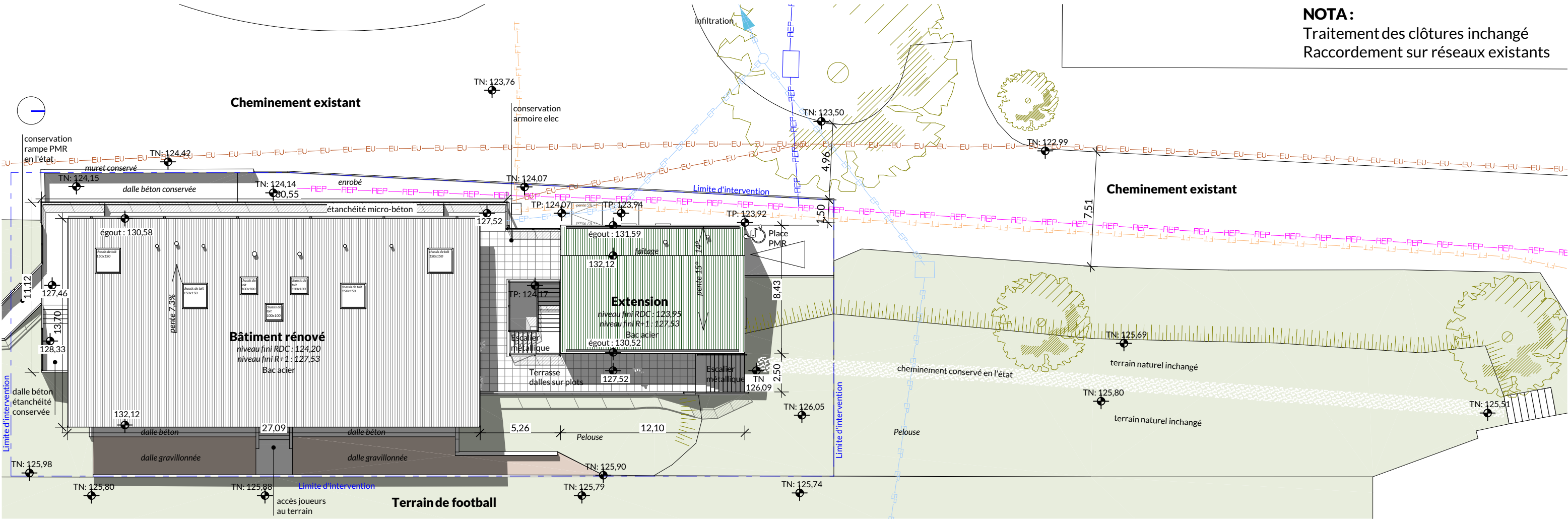
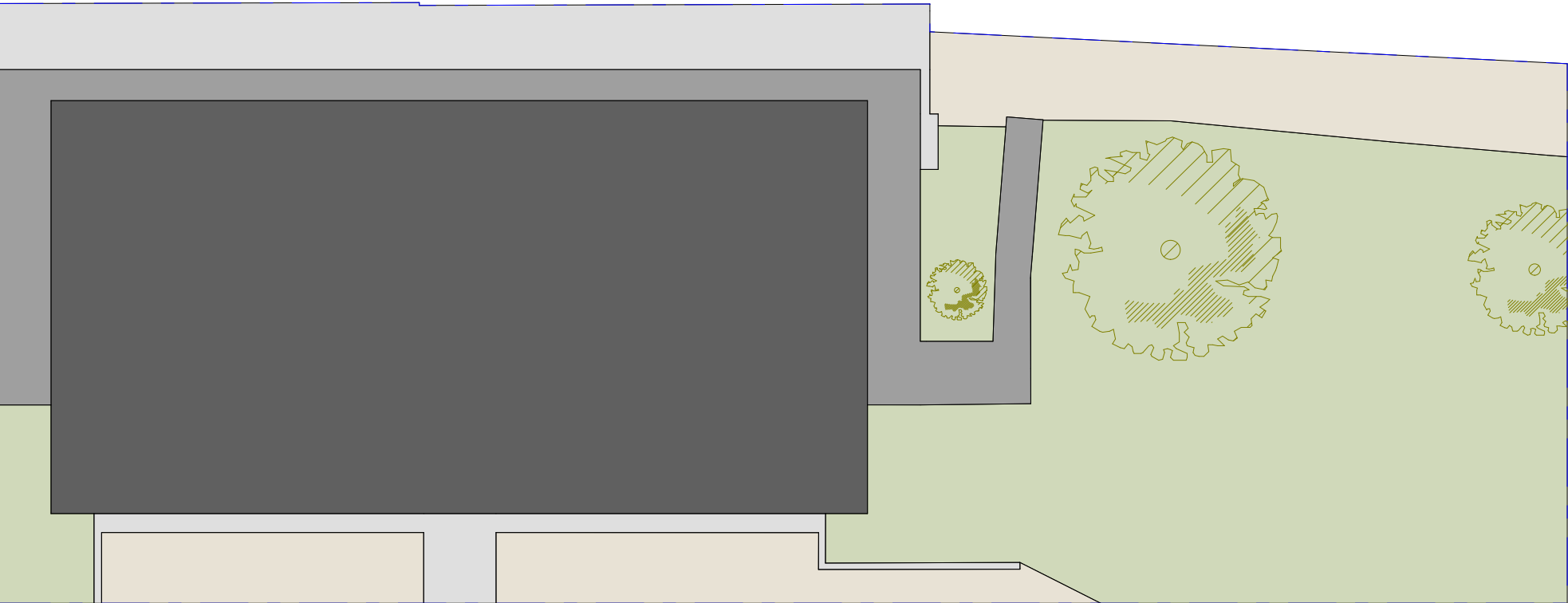


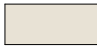

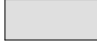


EXISTANT - Plan de masse éch: 1/250



PROJET - Plan de masse éch: 1/250

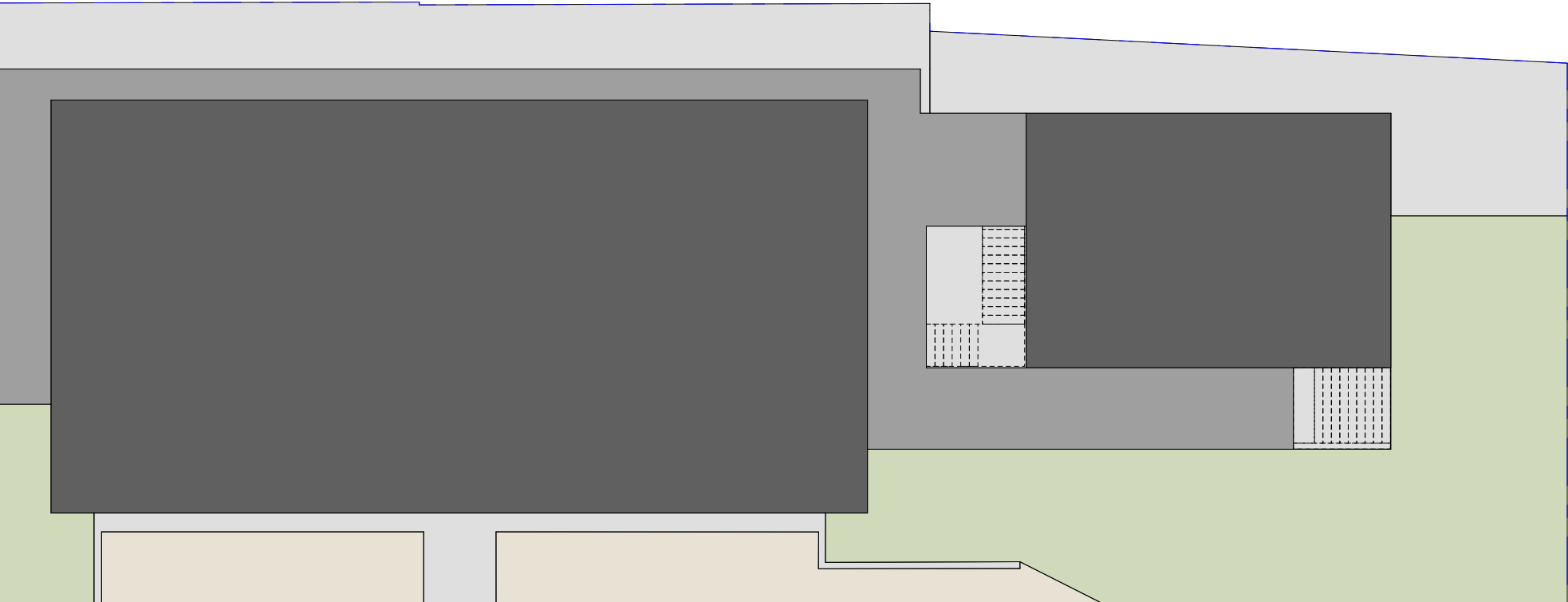
NOTA :
Traitement des clôtures inchangé
Raccordement sur réseaux existants

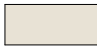

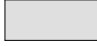




	sol poreux (stabilisé - gravier)	119m ²	11,8%
	sol perméable (pelouse)	338m ²	33,7%
		soit 45,5%	
	sol imperméable (béton - enrobé)	92m ²	9,2%
	emprise bâtiment (terrasse)	83m ²	8,3%
	emprise bâtiment (toiture)	371m ²	37%
		soit 54,5%	

> suppression de 3 arbres de petites tailles

AVANT TRAVAUX



	sol poreux (stabilisé - gravier)	60m ²	5,9%
	sol perméable (pelouse)	173m ²	17,2%
		soit 23,1%	
	sol imperméable (béton - enrobé)	181m ²	18,1%
	emprise bâtiment (terrasse)	116m ²	11,6%
	emprise bâtiment (toiture)	473m ²	47,2%
		soit 76,9%	

APRES TRAVAUX