

x:486781 y:6757868
(RGF93)

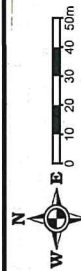
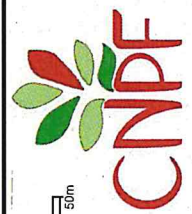
12/09/2022

Sources : ©CNPF©©IGN©©INPN©
Réalisation : ©CNPF, servcarto.fop v1.4

périmètre
travaux
décembre 2022



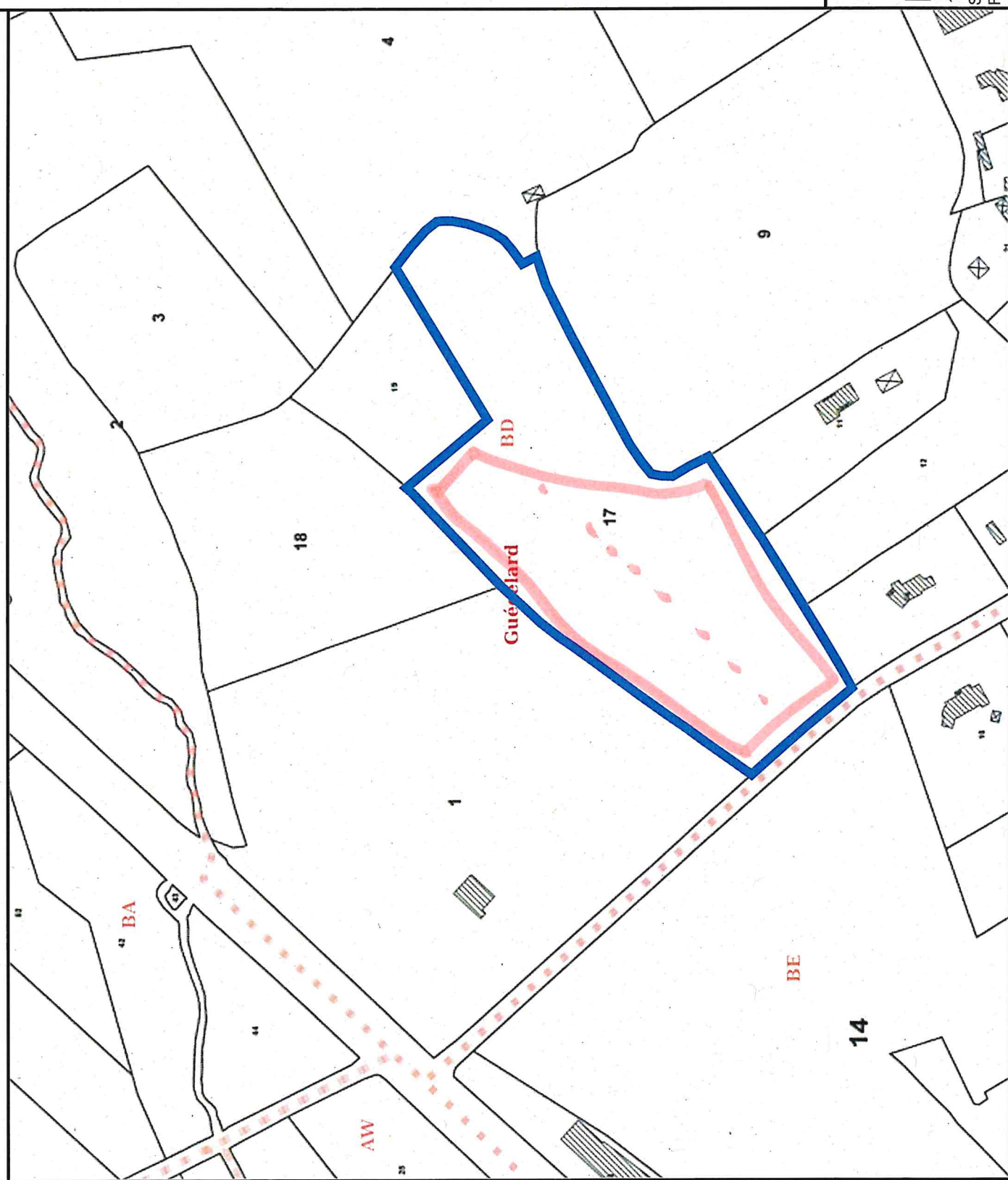
Haie
conservee



x:487081 y:6758365
(RGF93)

12/09/2022

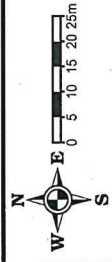
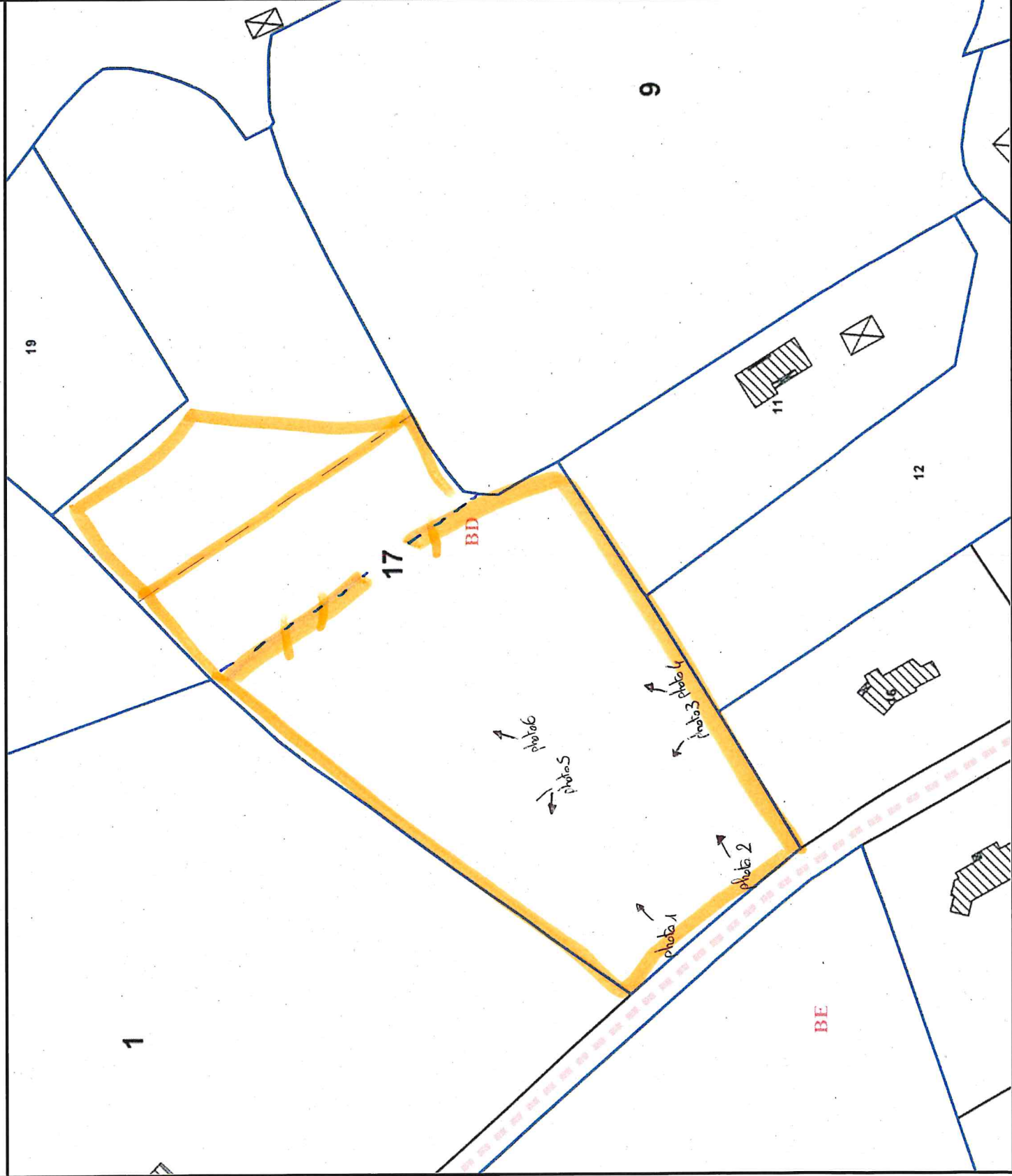
Sources : ©CNPF® ©IGN® ©INPN®
Réalisation : ©CNPF, servcarto.fop v1.4





Guecelard section C et Spay

Prises photos



• X:487111 Y:6756285
(RGF93)

16/06/2022

Sources : ©CNPF ©IGN ©INPN®
Réalisation : ©CNPF, servcarto.fop v1.4

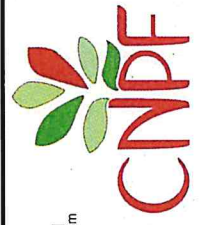


Photo 1

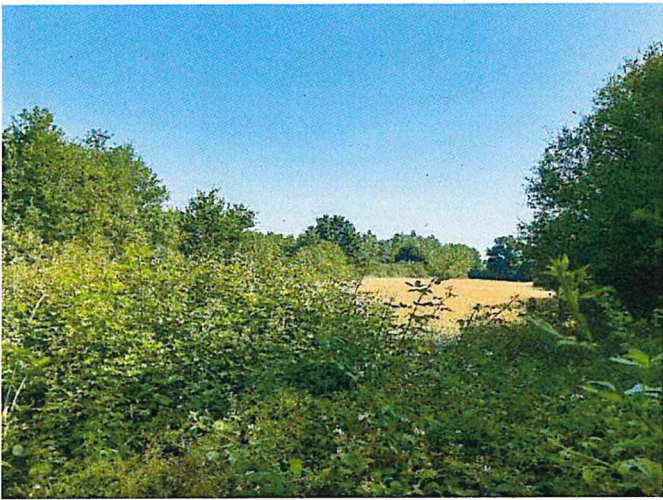


photo 2



Photo 3



photo 4



Photo 5



photo 6

