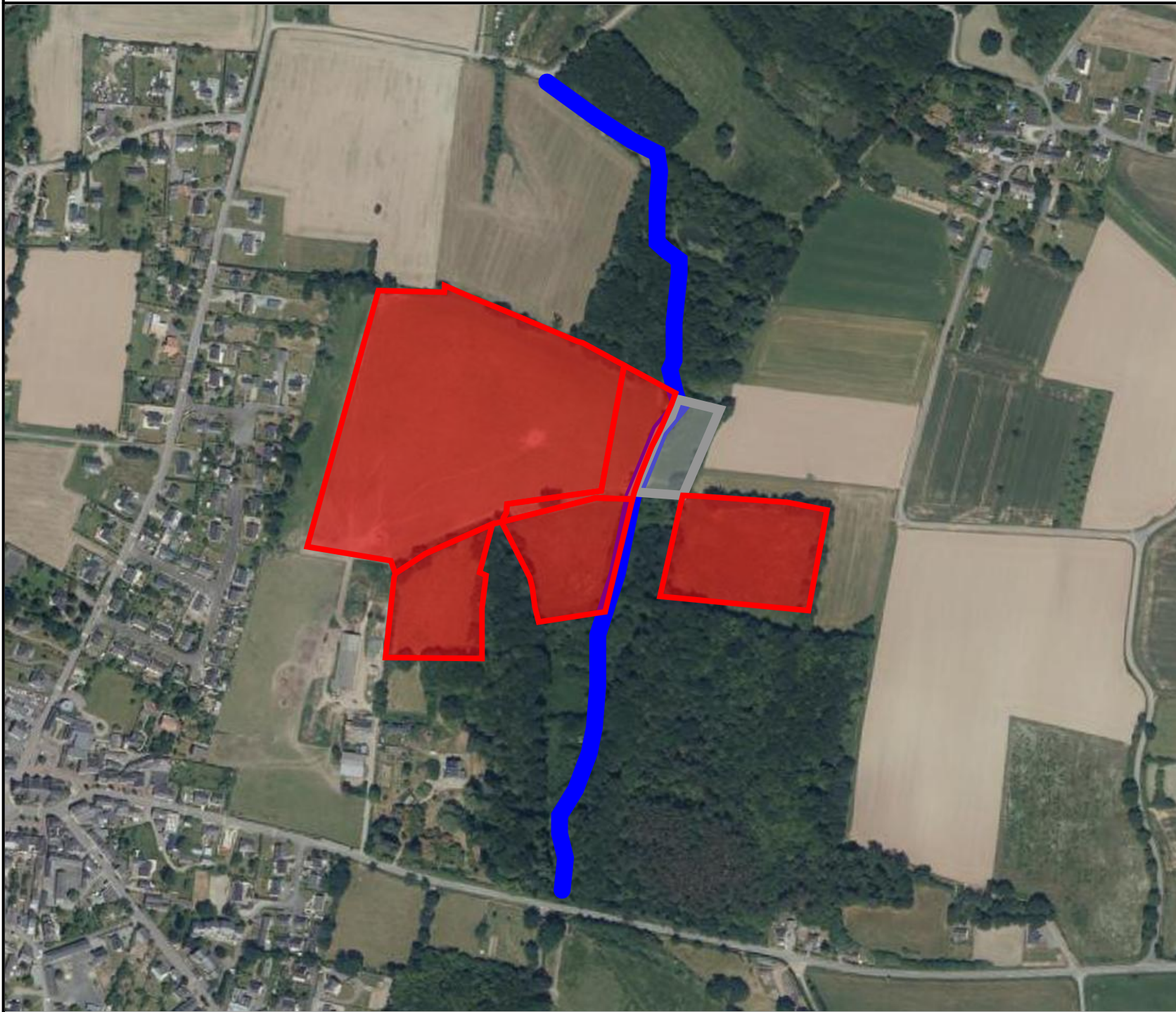



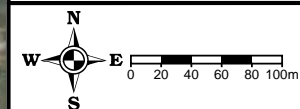


Plan et abords du projet - Avessec (44)



-  Cours d'eau 853 m
-  Zone hulide non boisée 0.3898 ha
-  Contour du projet de boisement 8,80 ha



• x:326262 y:6740268
(RGF93)

11/04/2022

Sources : ©CNPF® ©IGN® ©INPN®

Réalisation : ©CNPF, servcarto.fop v1.4

