

# Porter à connaissance "Espaces naturels"

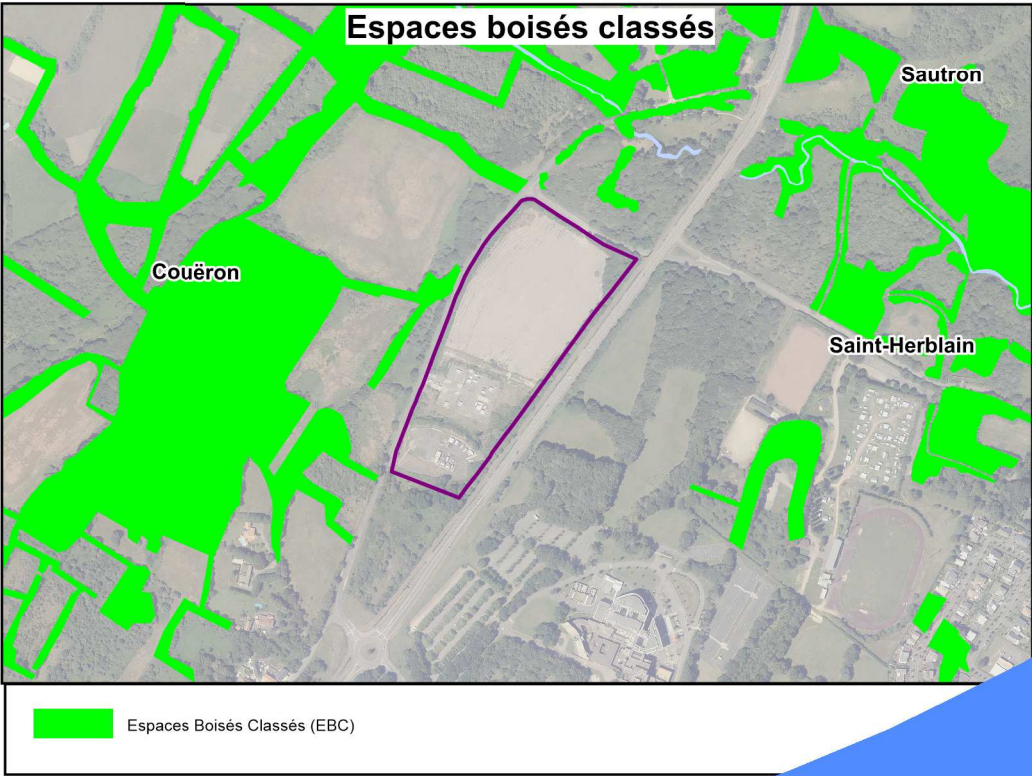
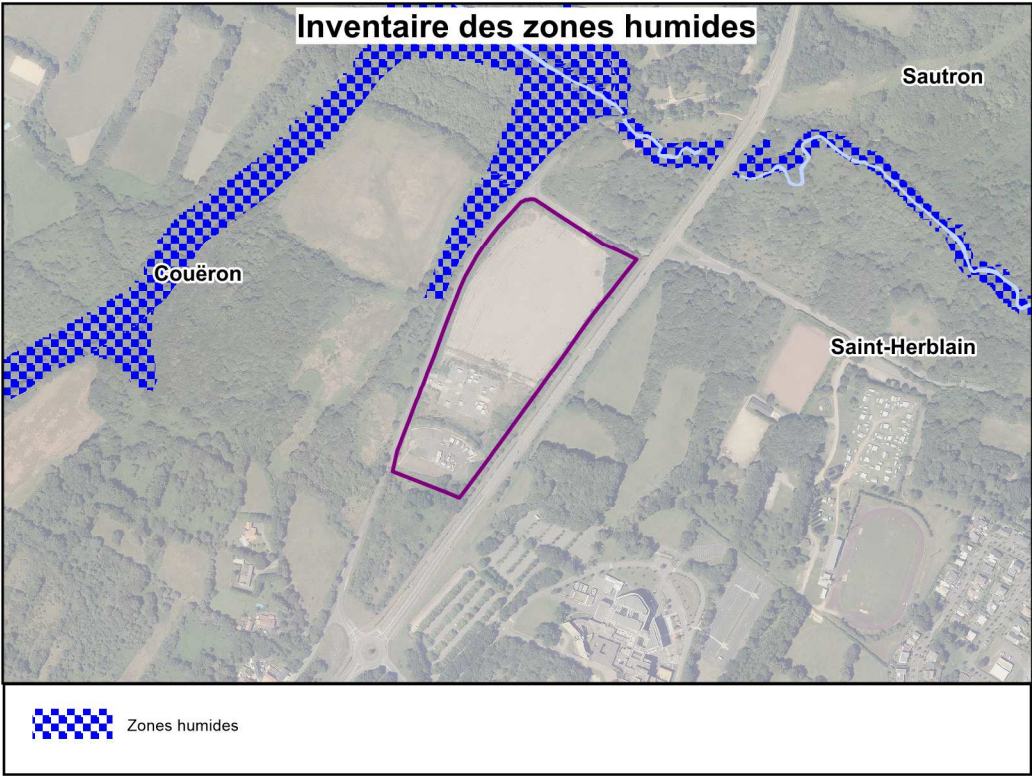
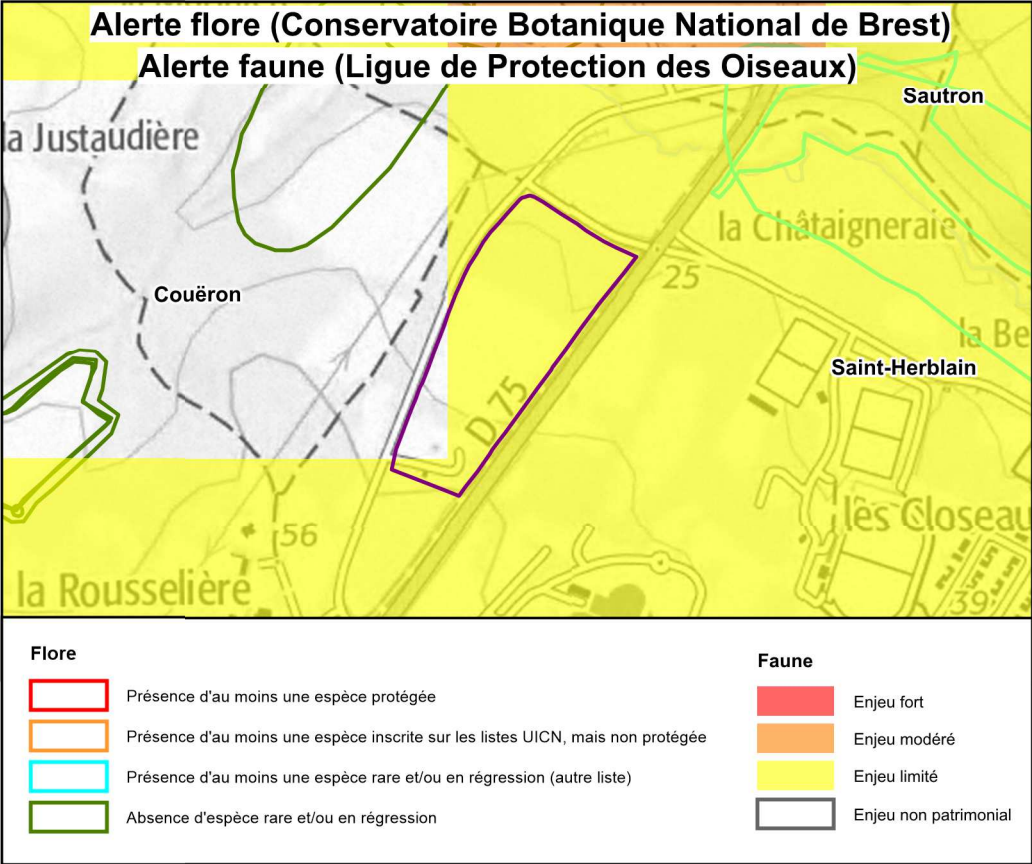
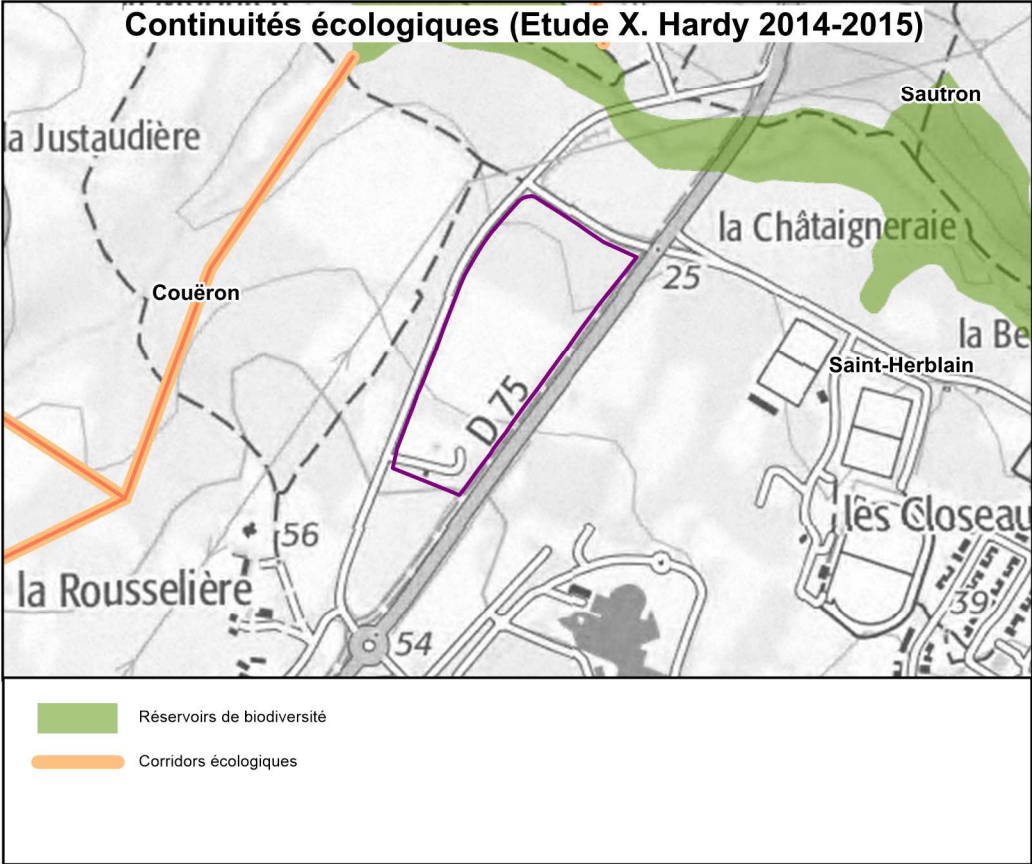
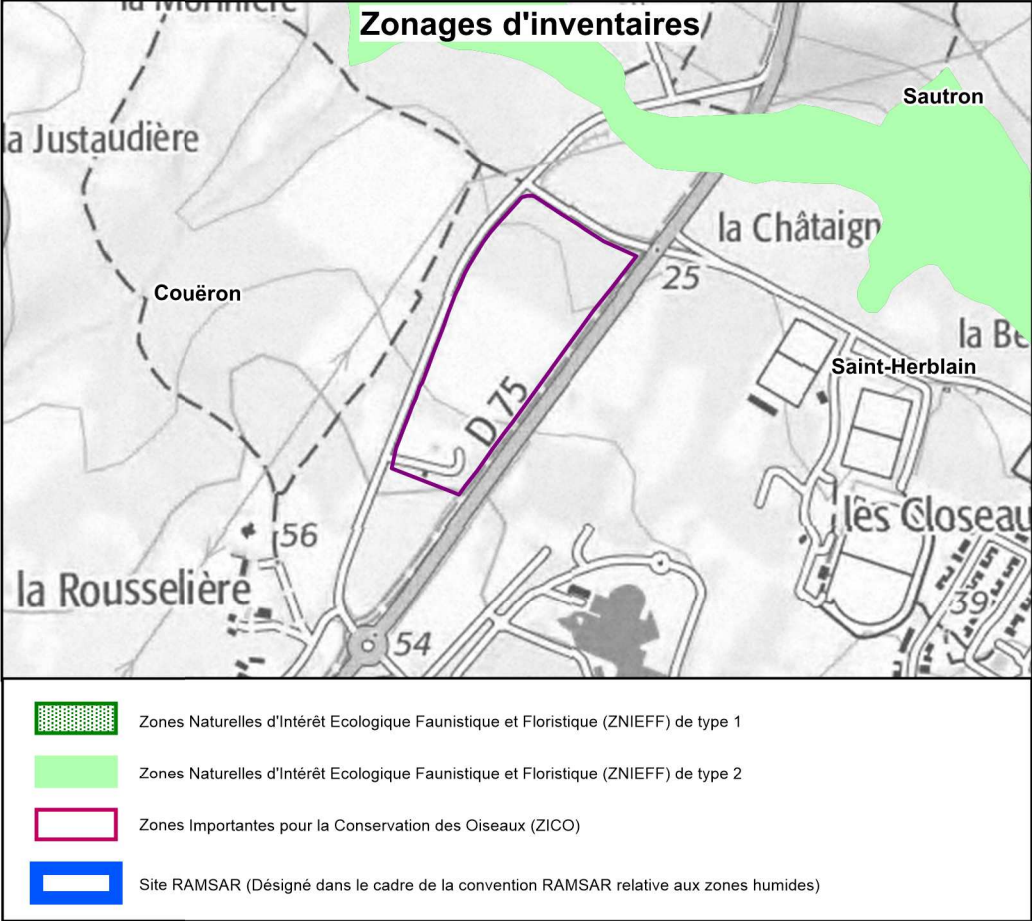
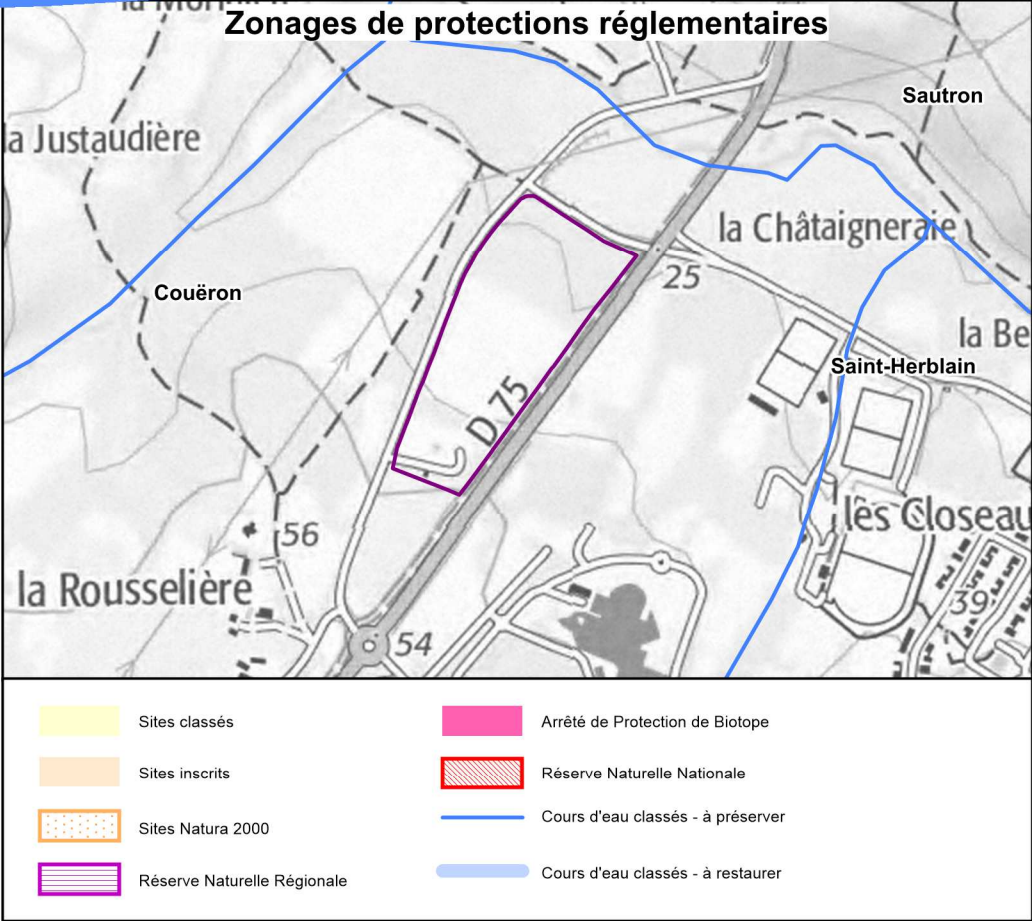
Aire d'accueil des Gens du voyage  
Saint-Herblain - Rue de la Rousselière



0 100 200  
Mètres

Échelle: 1:10 000

Format d'origine A3 (42 x 29.7)



Limites de communes  
Surfaces en eau  
Périmètre de l'étude