


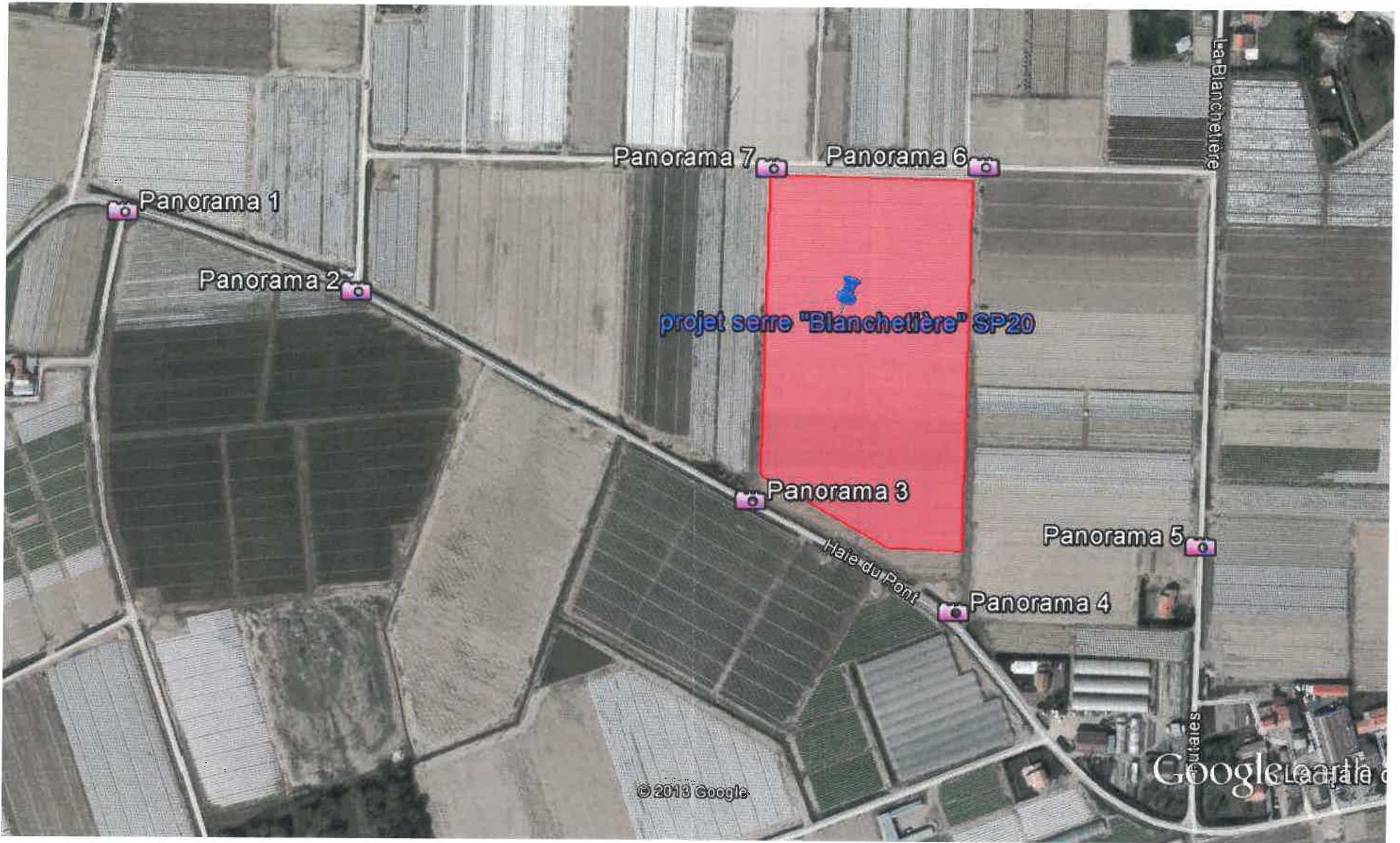
Projet:
La Haie du pont
44 450 La Chapelle Basse Mer

Parcelles:

ZH 278	9 735m ²
ZH 277	9 735m ²
ZH 87	5 420m ²
ZH 88	710m ²
ZH 89	11 950m ²
surface totale: 37 550m²	



	PC 1	Plans de situation	21/05/2013
	S.13.08	Construction de structures légères et démontables La chapelle basse mer SCEA PRIMALOIRE	PC Incise



Google earth

pieds
mètres







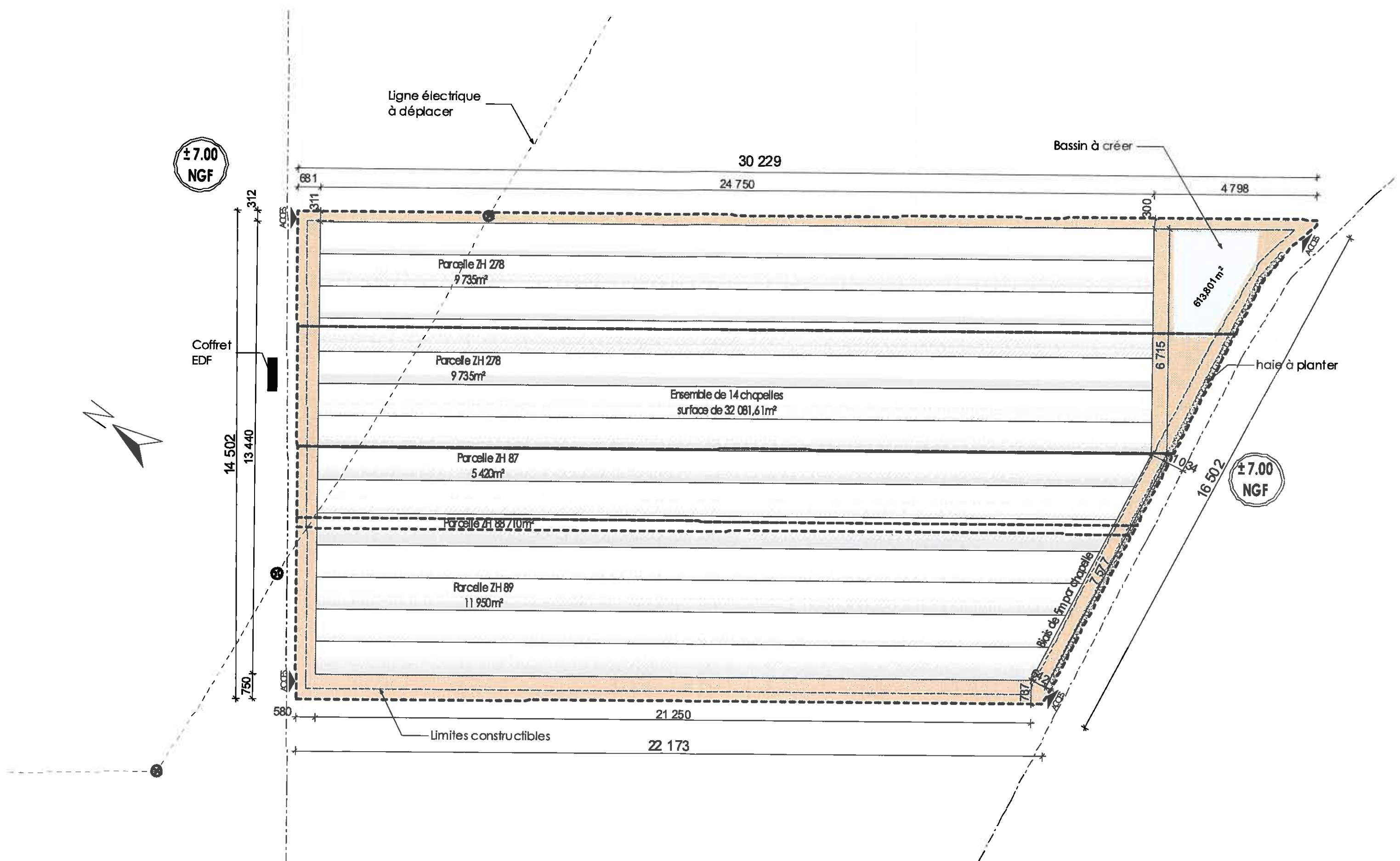













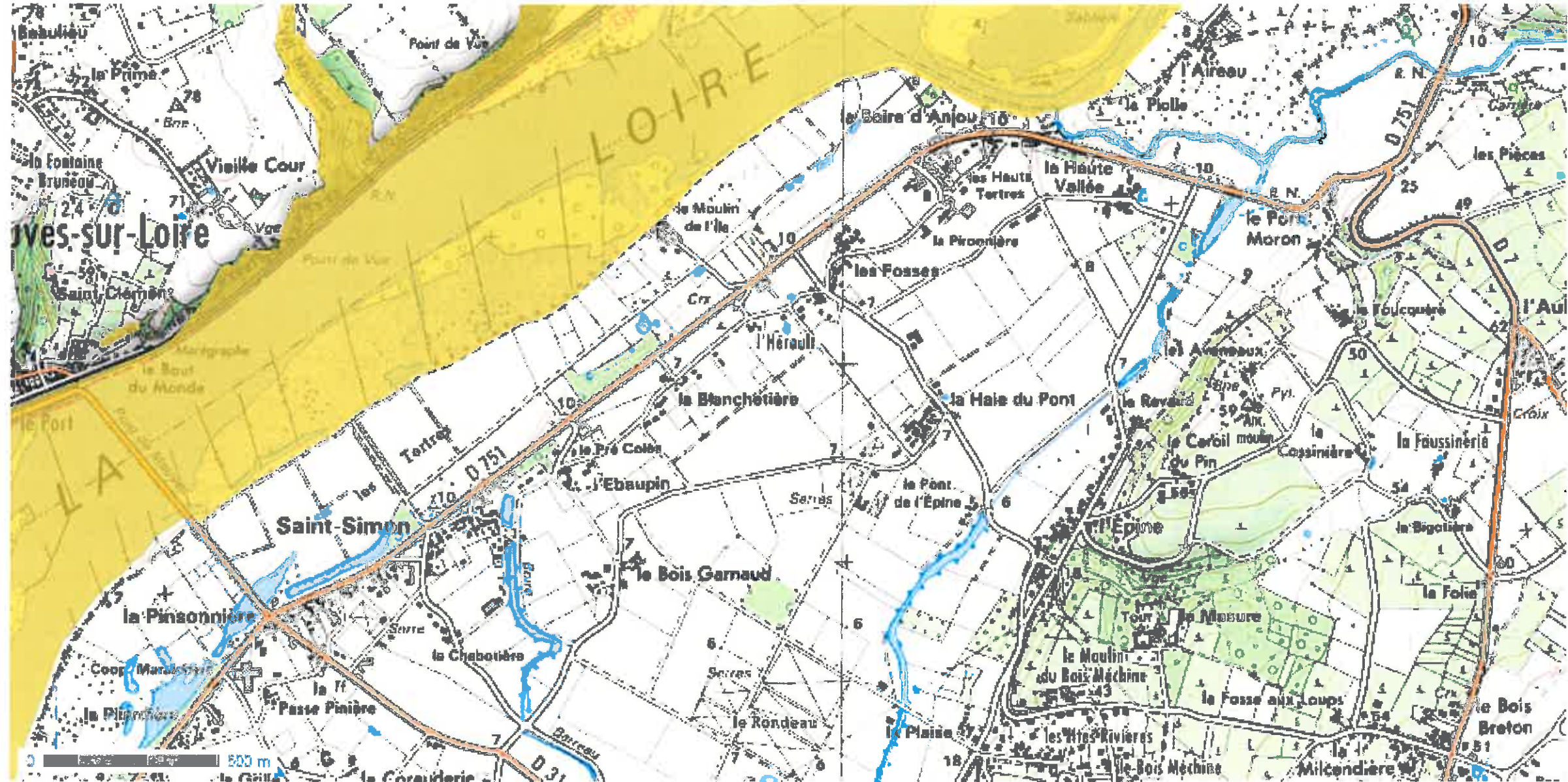


	PC 2	Plan de masse	14/05/2013
	S.12.08	Construction de structures légères et démontables La chapelle basse mer SCEA PRIMALOIRE	PC Indice



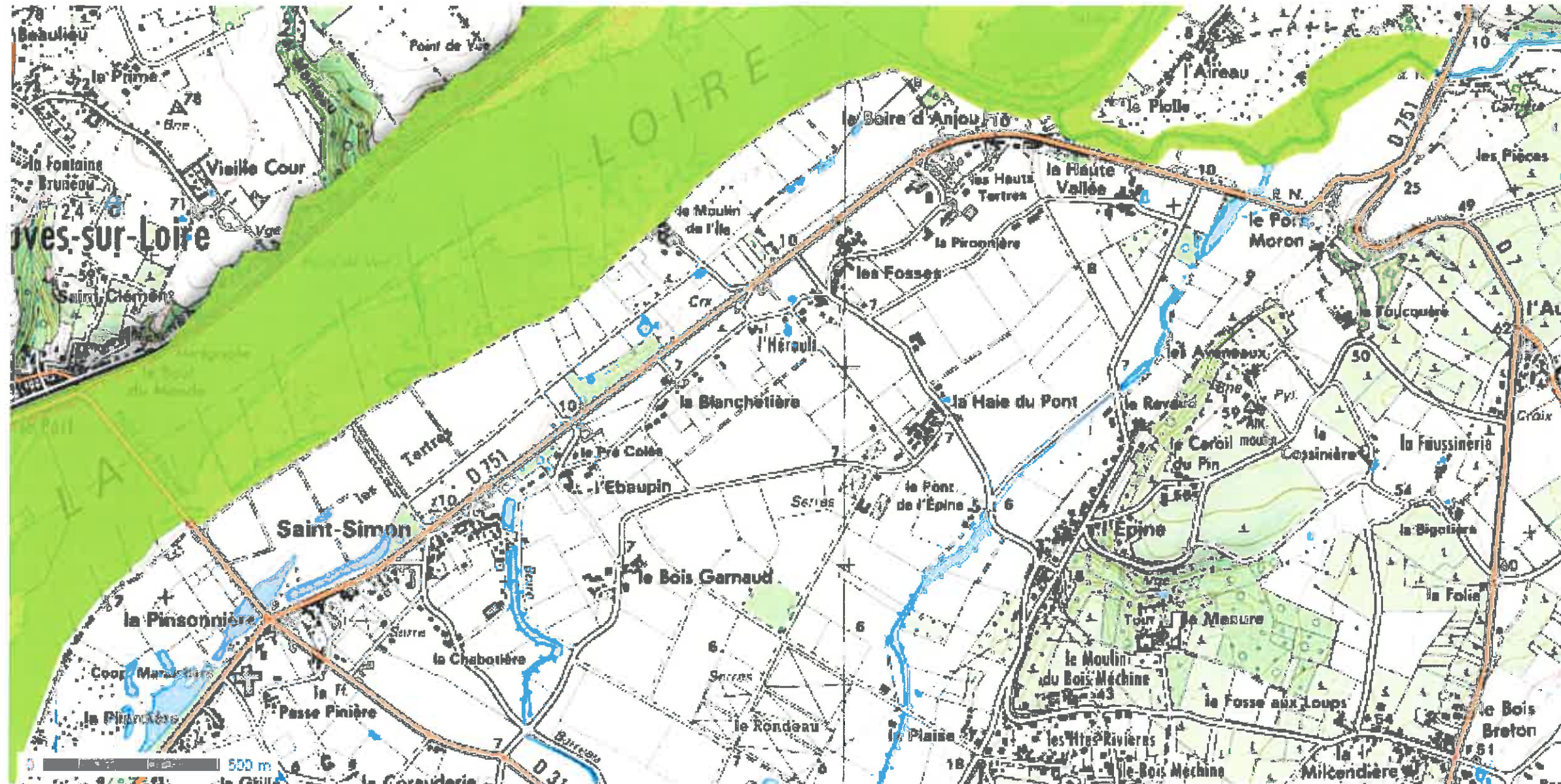
		PC 6	Insertion paysagère		21/05/2013
		\$ 13.08	Construction de structures légères et démontables La chapelle basse mer SCEA PRIMALOIRE	PC	Incise

P23 - Directive Habitats

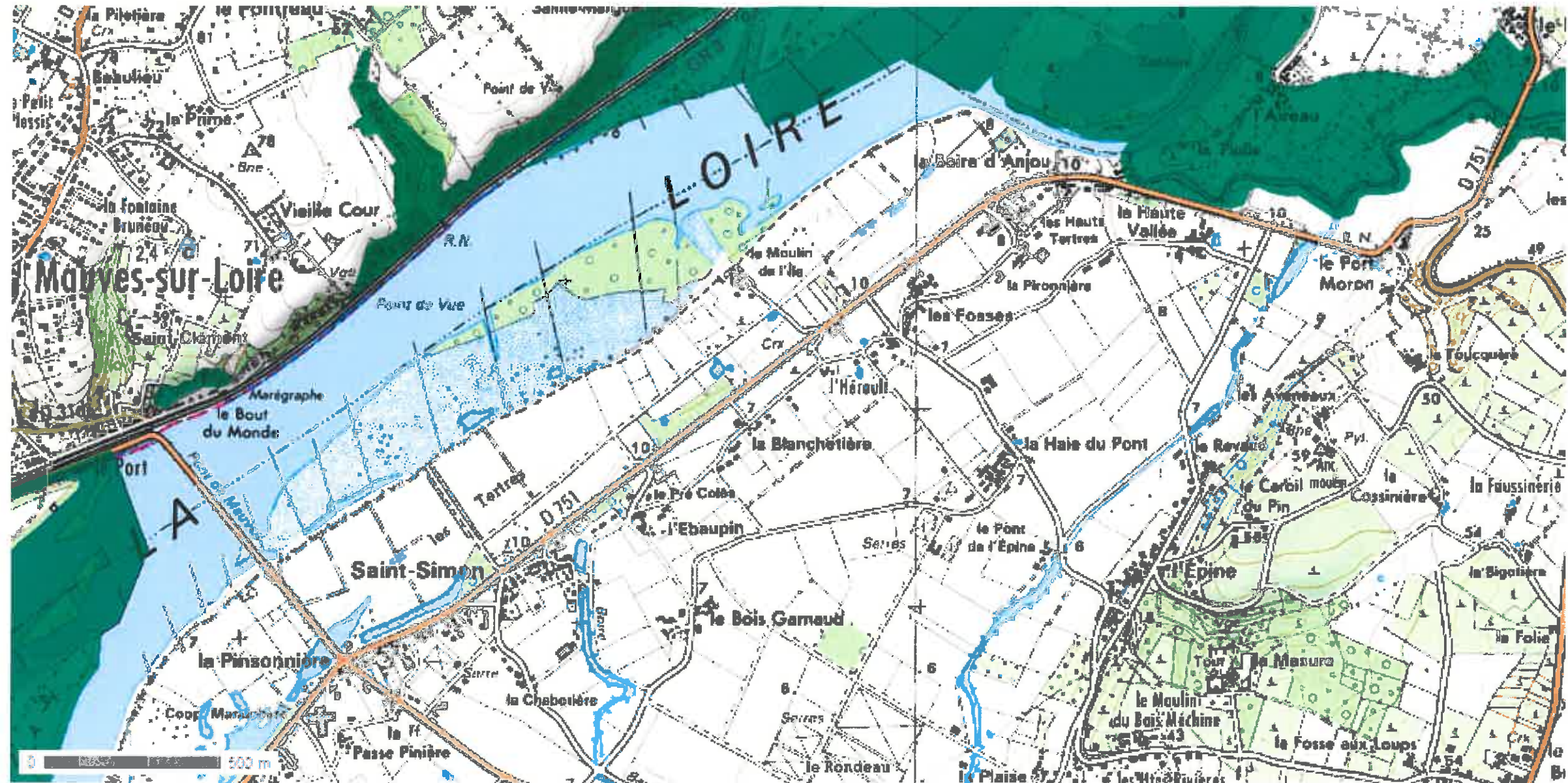


Longitude : 1° 21' 20.9" W
Latitude : 47° 17' 39.1" N

P23 - Directive Oiseaux



P23 - ZNIEFF 1



P23 - ZNIEFF 2

