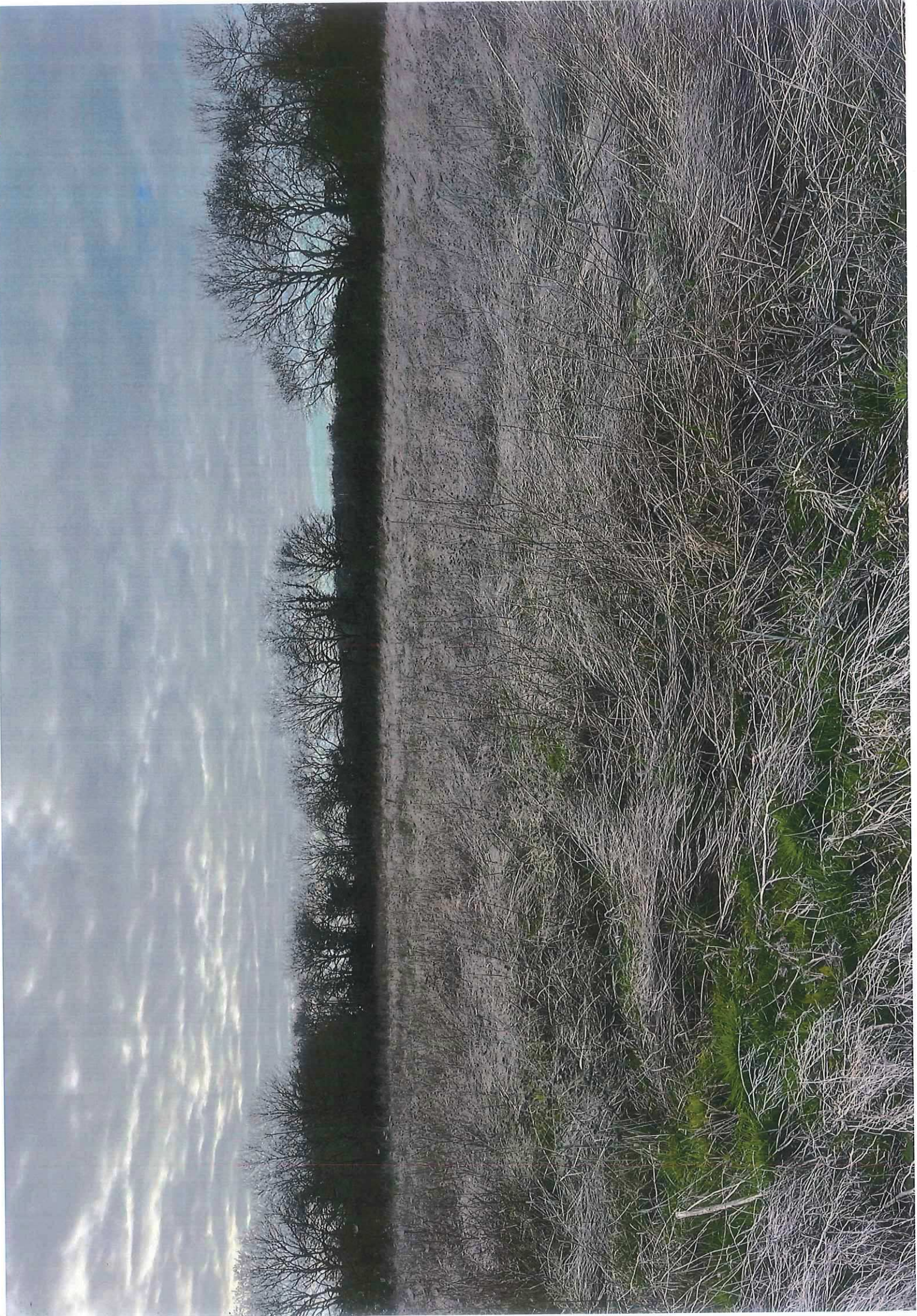


photo 4

11/15/02/24



Re 15/02/24

photo 1

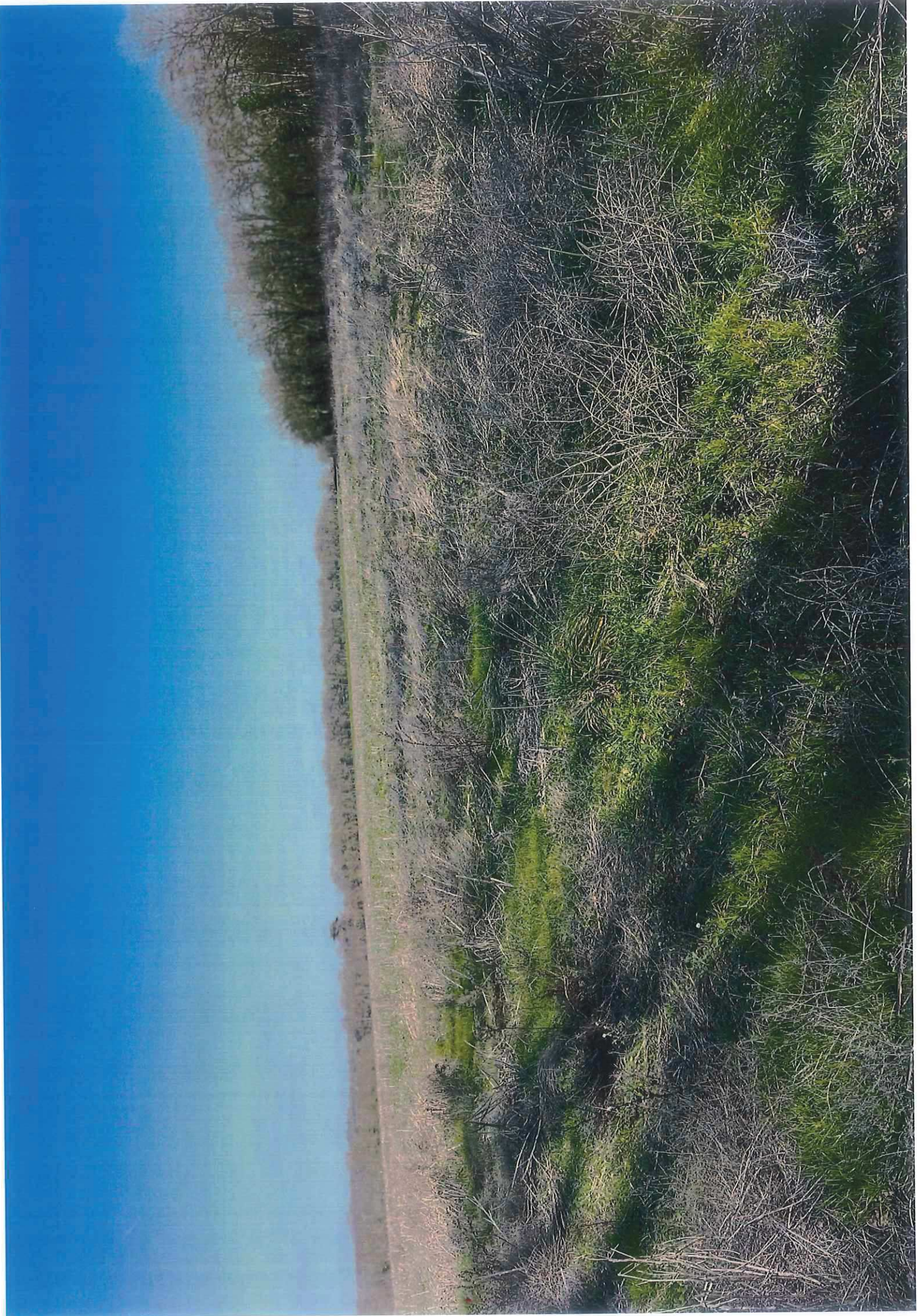
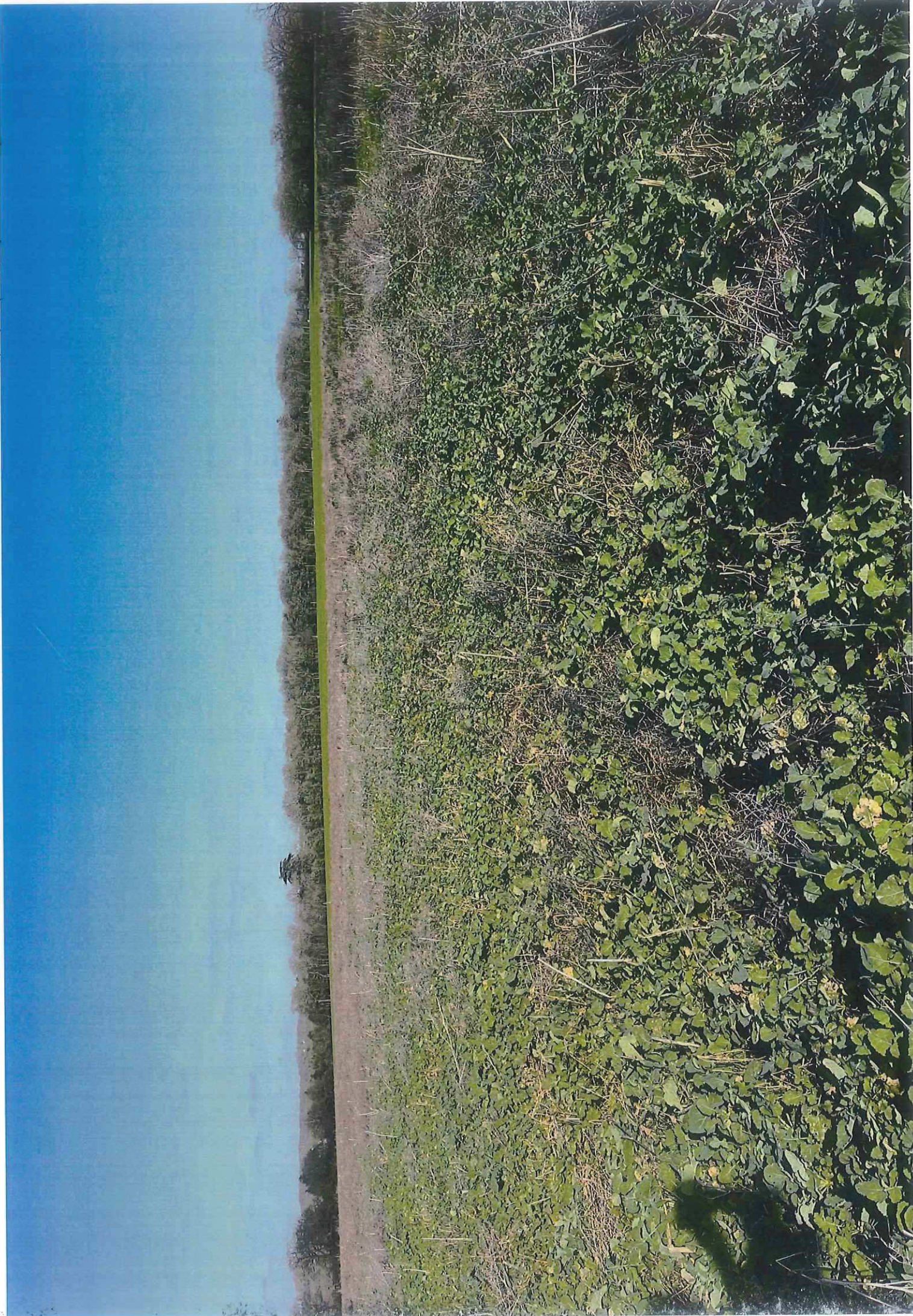
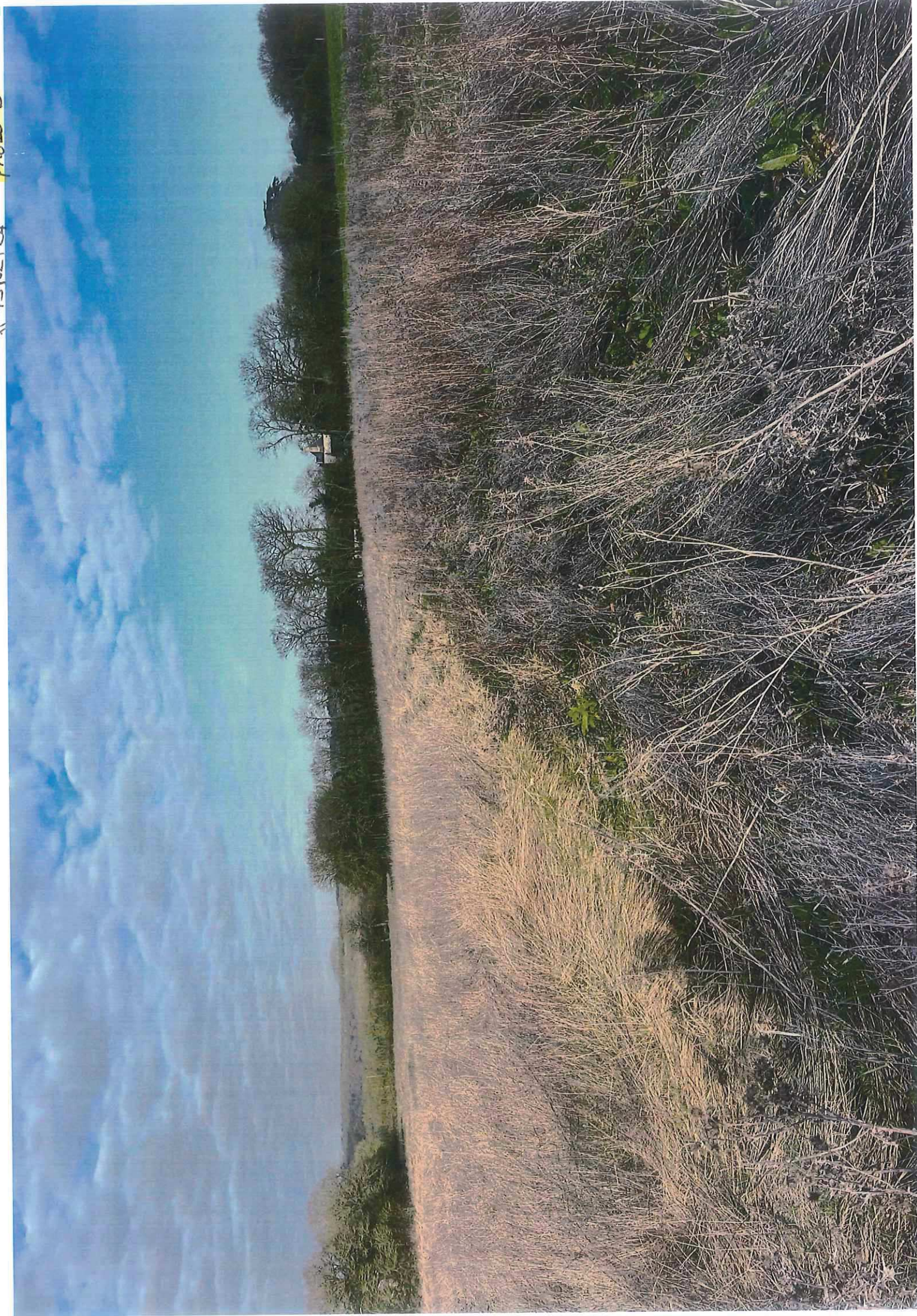


Photo 2

8-15-02-124



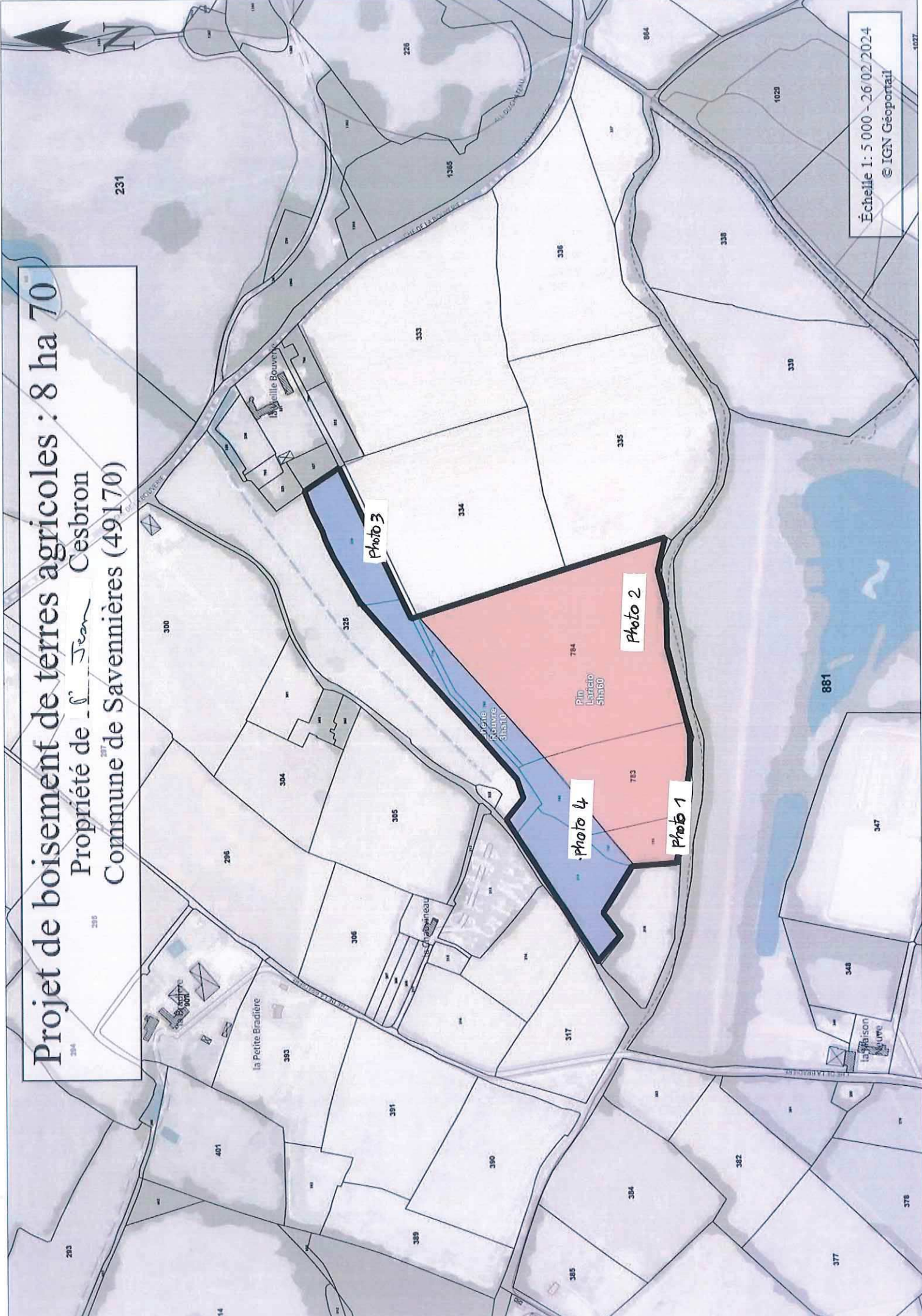
8-15/02/24 PHOTO 3



Zones humides potentielles

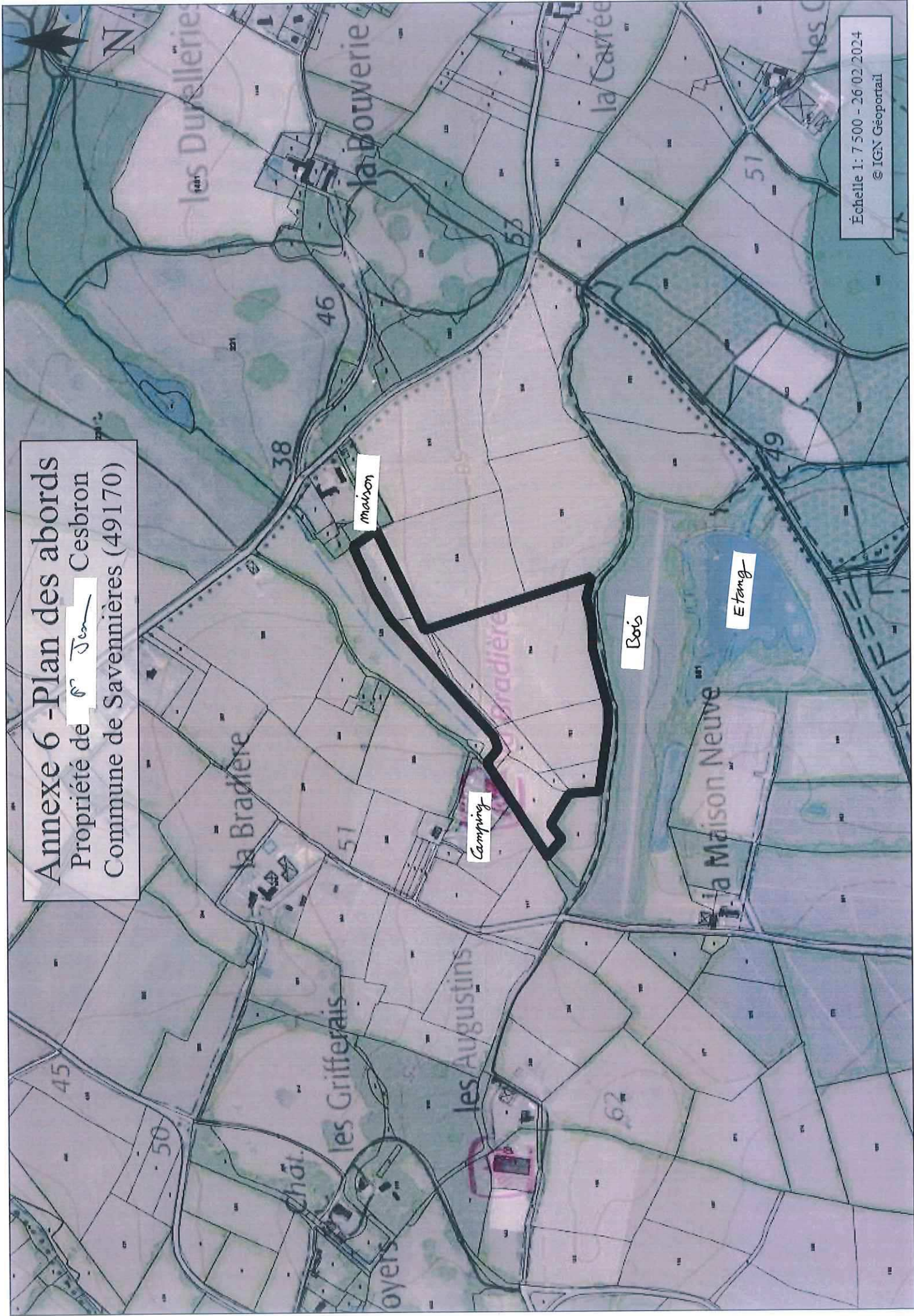
The screenshot displays a GIS web application interface. At the top, a browser window shows several open tabs, including 'SIG Réseau zones' and 'Projet de boisem...'. The main map area shows an aerial view of a rural landscape with blue overlays indicating potential wetlands. A black circle highlights a specific area on the map. The legend on the right side, titled 'Couches disponibles', lists various data layers with checkboxes. The legend includes categories such as 'Zones humides effectives (1)', 'Zones humides probables (10)', and 'Cartographie nationale des milieux humides - 2023'. The bottom of the interface features a toolbar with navigation and tool icons, and a search bar with the text 'Taper ici pour rechercher'. The bottom right corner shows a scale bar (100 m / 200 ft) and a coordinate display (42,4365 74,654, 67,09473, 106,106).

Projet de boisement de terres agricoles : 8 ha 70
Propriété de *Jean Cesbron*
Commune de Savennières (49170)



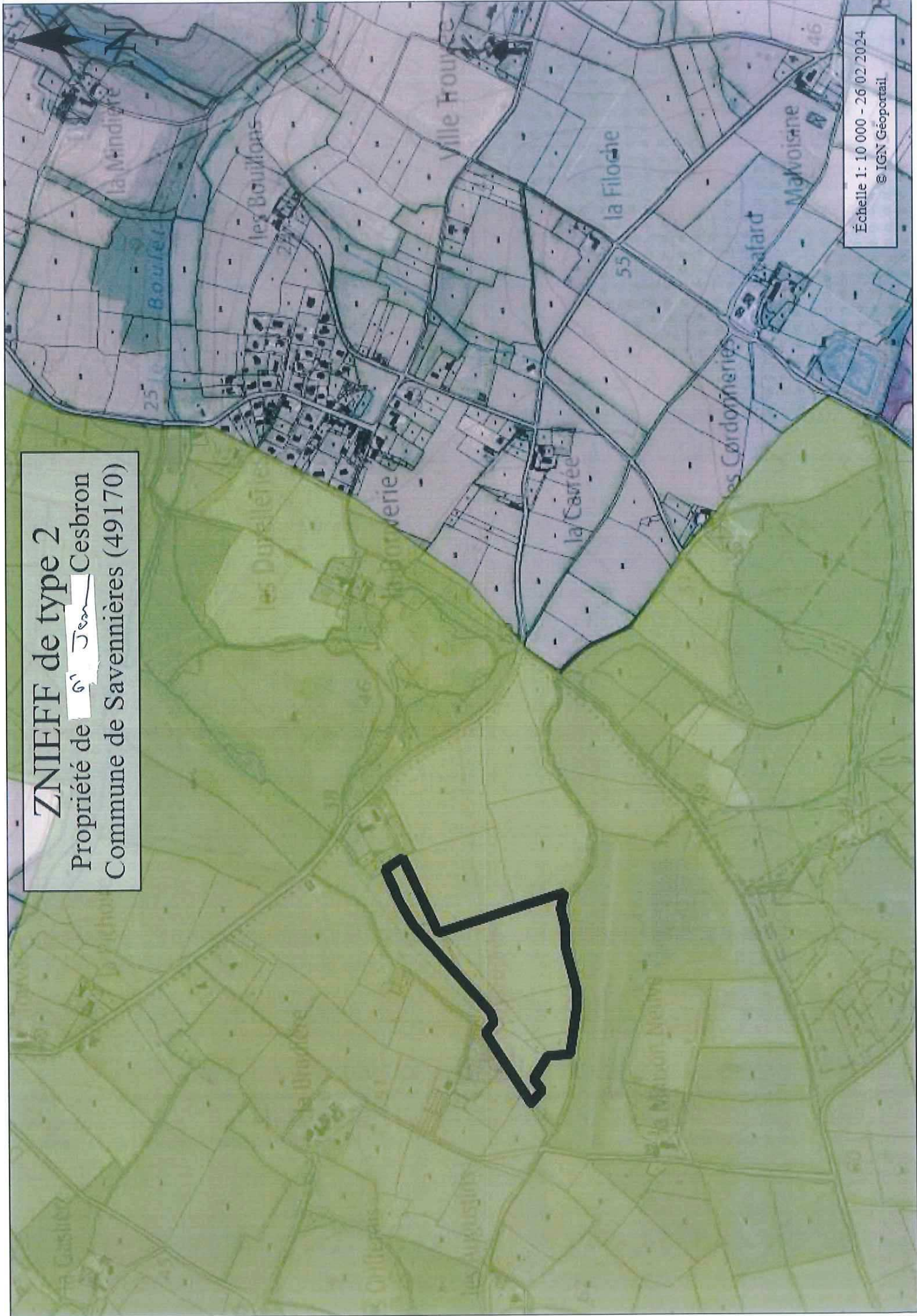
Échelle 1: 5 000 - 26/02/2024
© IGN Géoportail

Annexe 6 - Plan des abords
Propriété de M. Jean [redacted] Cesbron
Commune de Savennières (49170)



Échelle 1: 7 500 - 26.02.2024
© IGN Géoportail

ZNIEFF de type 2
Propriété de [redacted] Cesbron
Commune de Savennières (49170)



Échelle 1: 10 000 - 26/02/2024
© IGN Géoportail

Annexe 7 - Zone Natura 2000 à proximité

Propriété de M. Jean Cesbron

Commune de Savennières (49170)

4 km

