

Légende

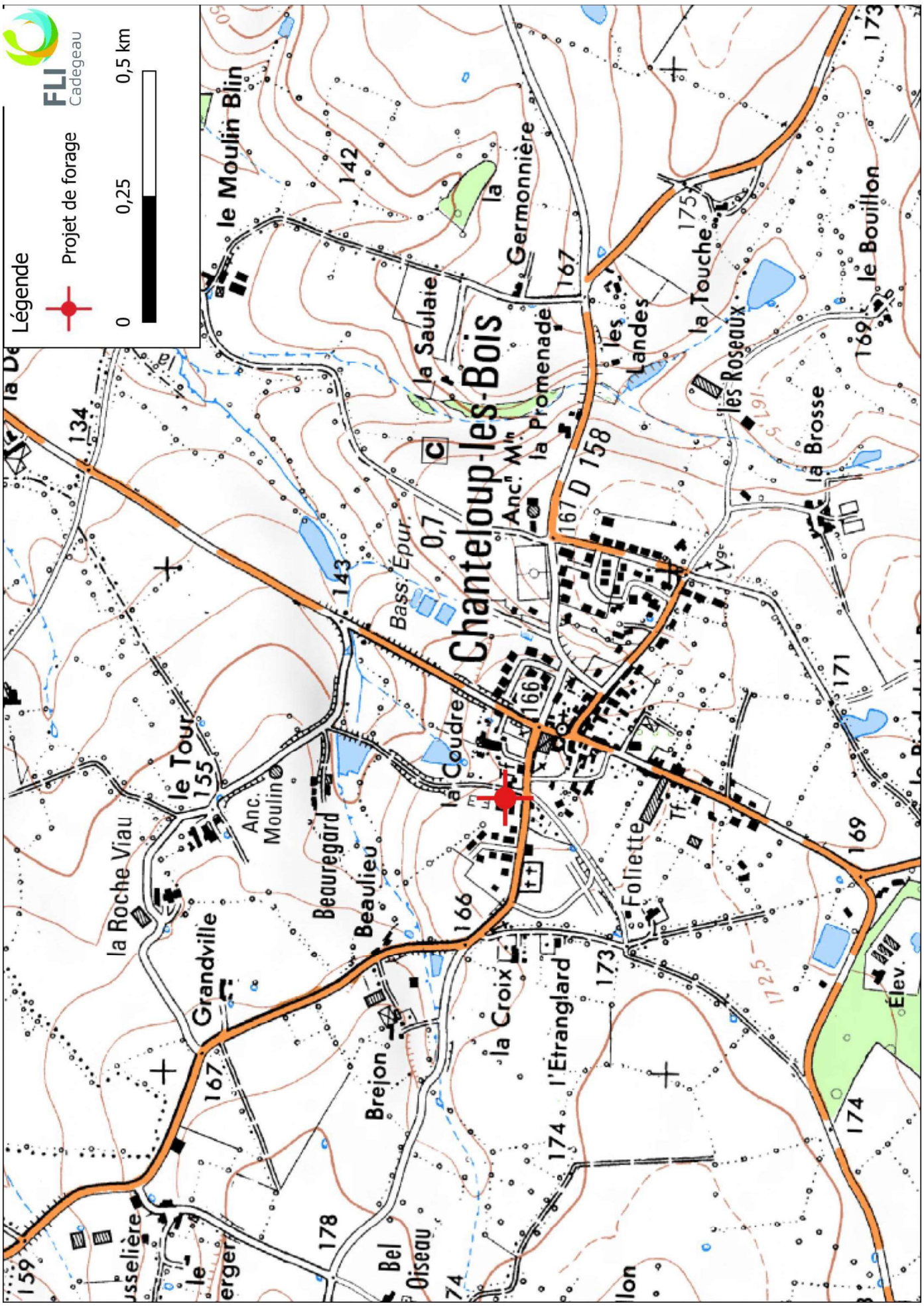


Projet de forage


0

0,25


0,5 km




Légende

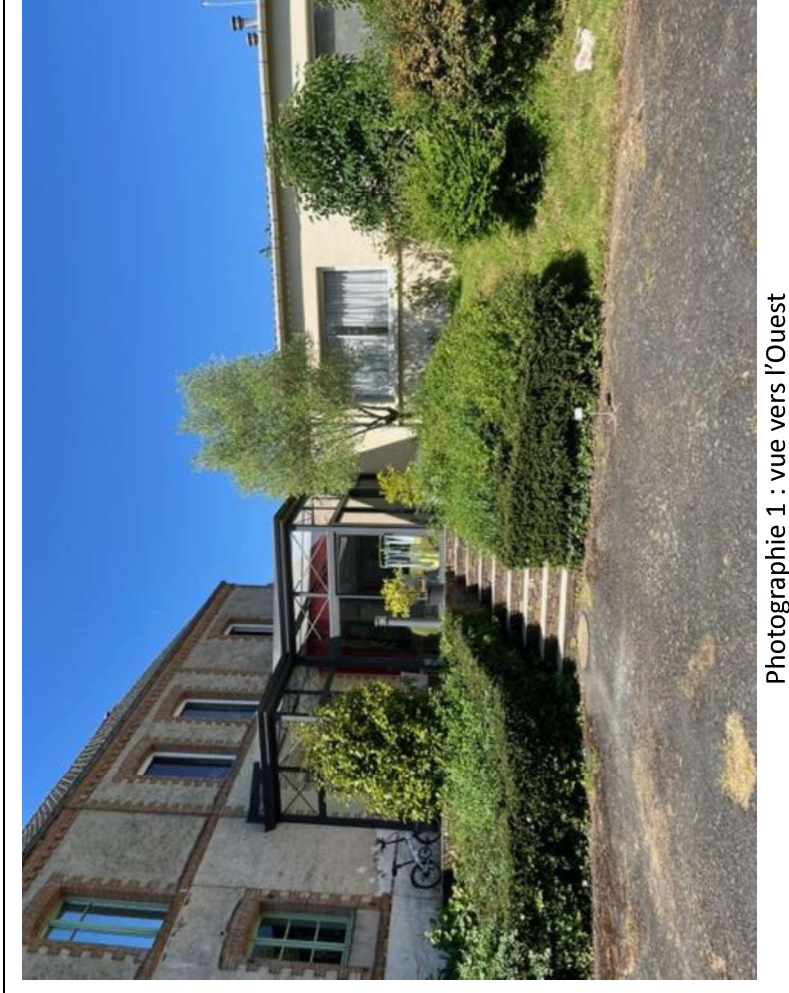


Projet de forage



0 25 50 m





Photographie 1 : vue vers l'Ouest



Photographie 2 : vue vers le Sud

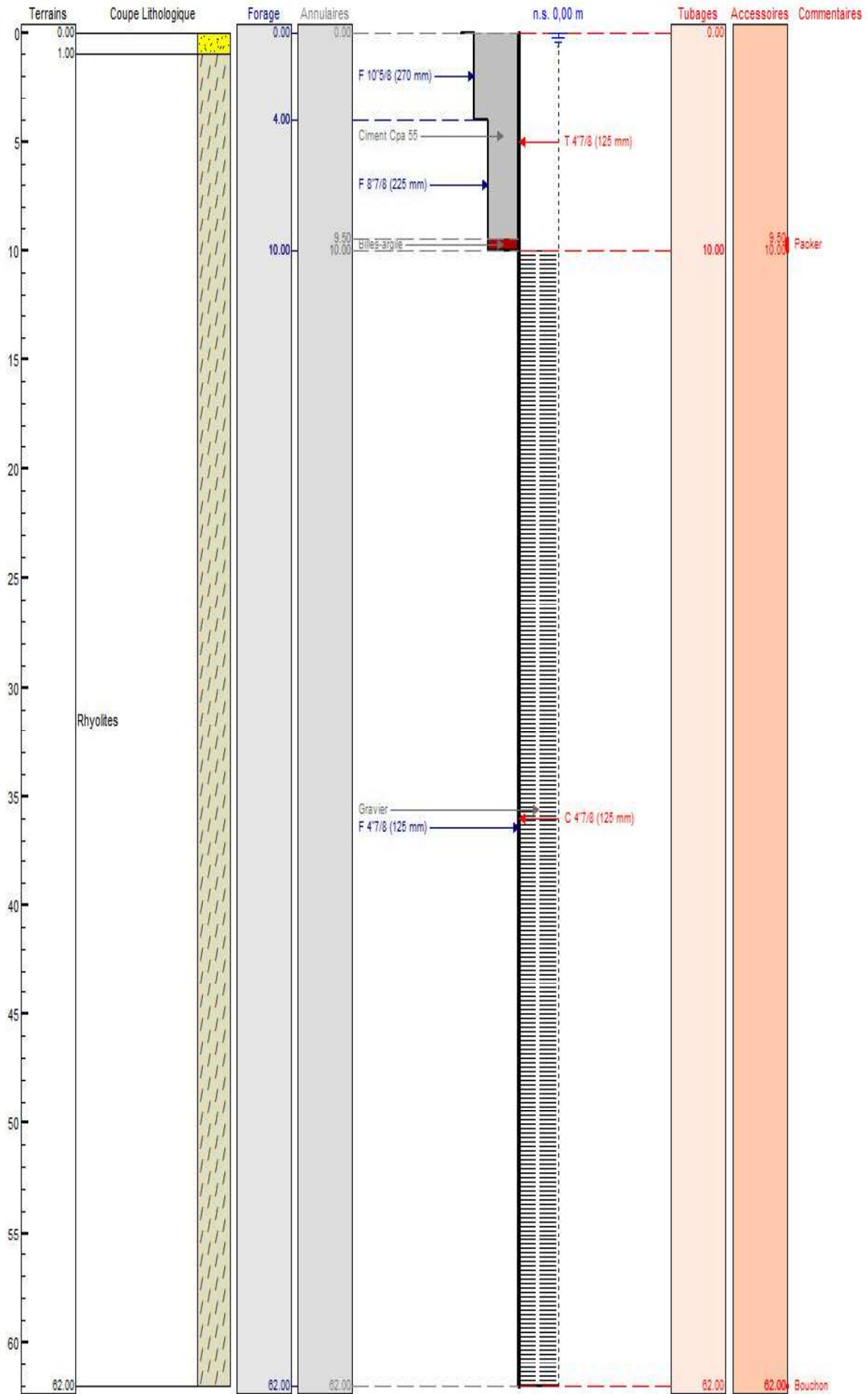


Photographie 3 : vue vers le Sud-Est



Photographie 4 : Emplacement du forage

Coupe prévisionnelle du forage de de la SARL DMG CONSEIL





Projet de forage **FLI**
Cadegeau

Légende



Rayon 35 m



Rayon 50 m



Rayon 200 m



Zones humides



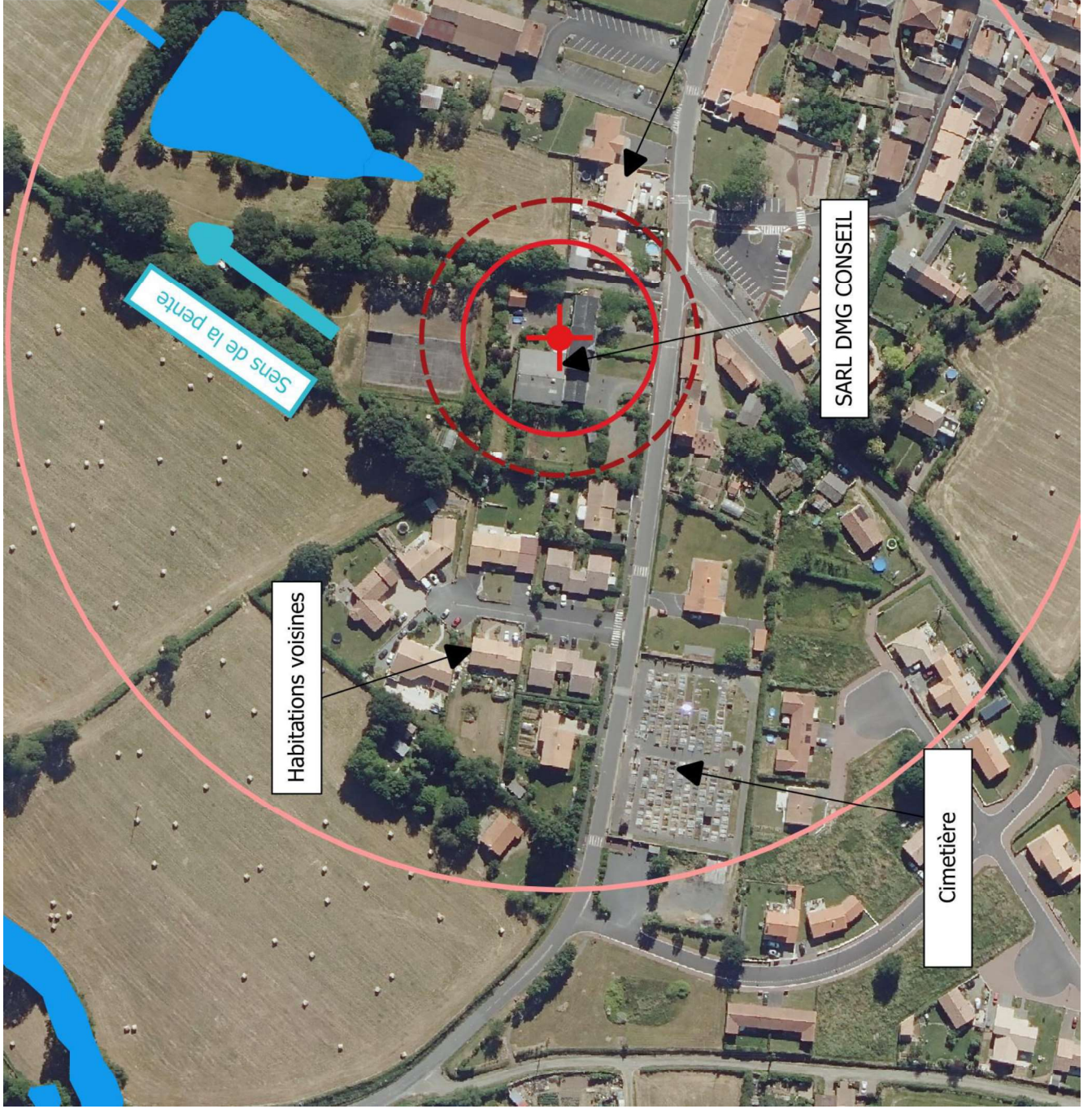
Sites BASOL




100 m


50


0





Légende


 **Projet de forage**


 **Ouvrages de la banque du sous-sol**

 **Rayon 500 m**

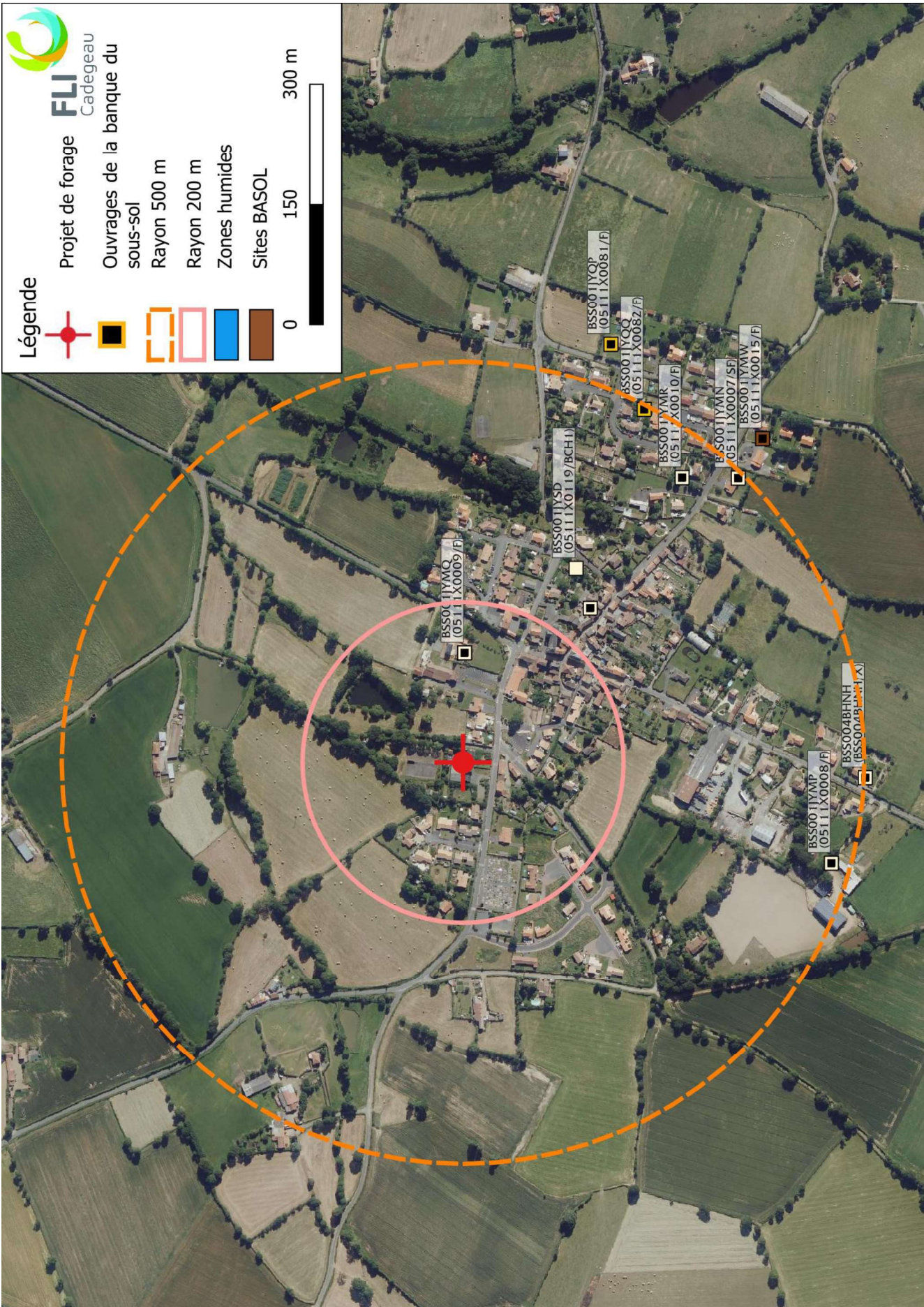
 **Rayon 200 m**

 **Zones humides**

 **Sites BASOL**



FLI
Cadegeau
Banque du sous-sol





Légende

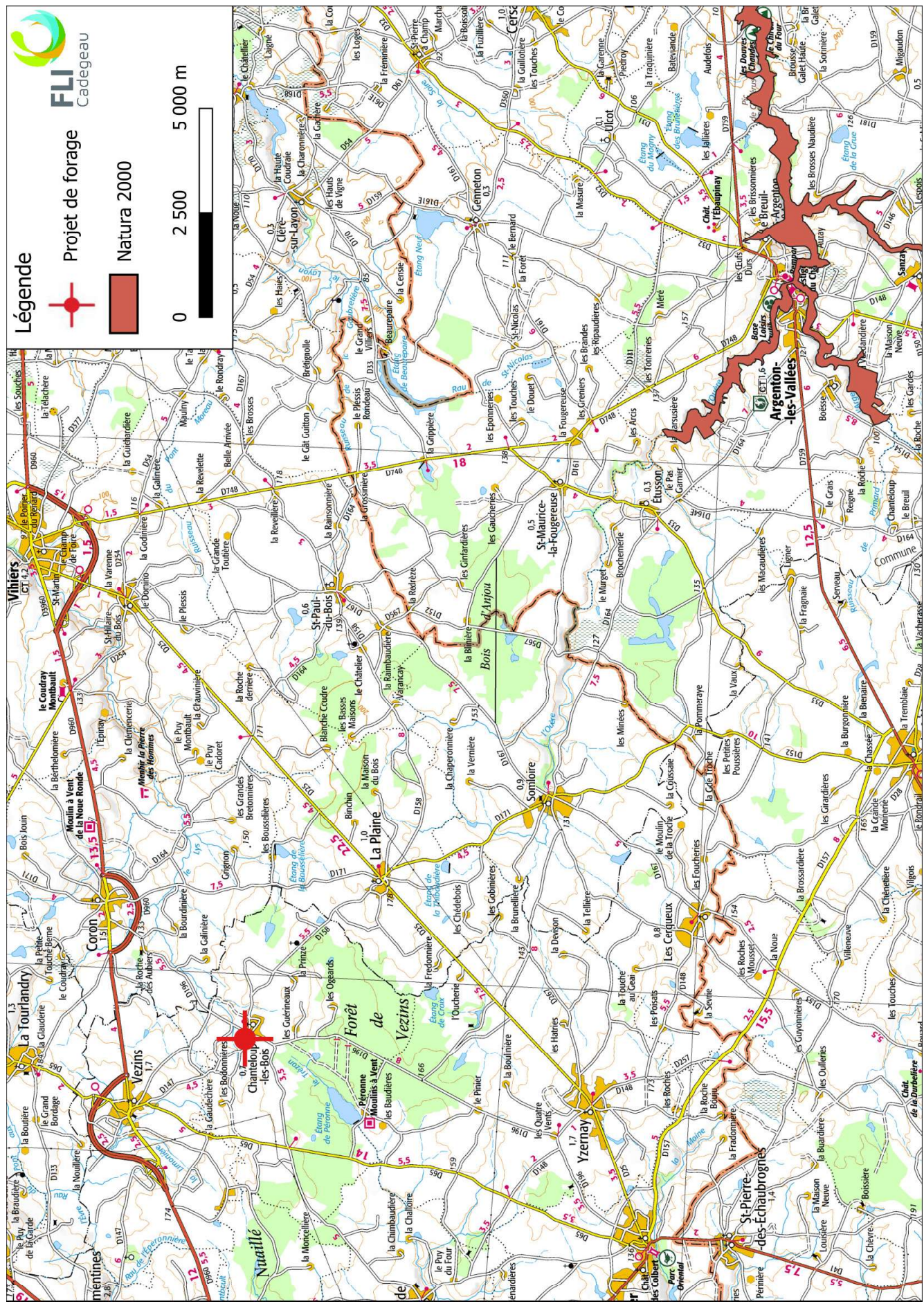


Projet de forage



Natura 2000

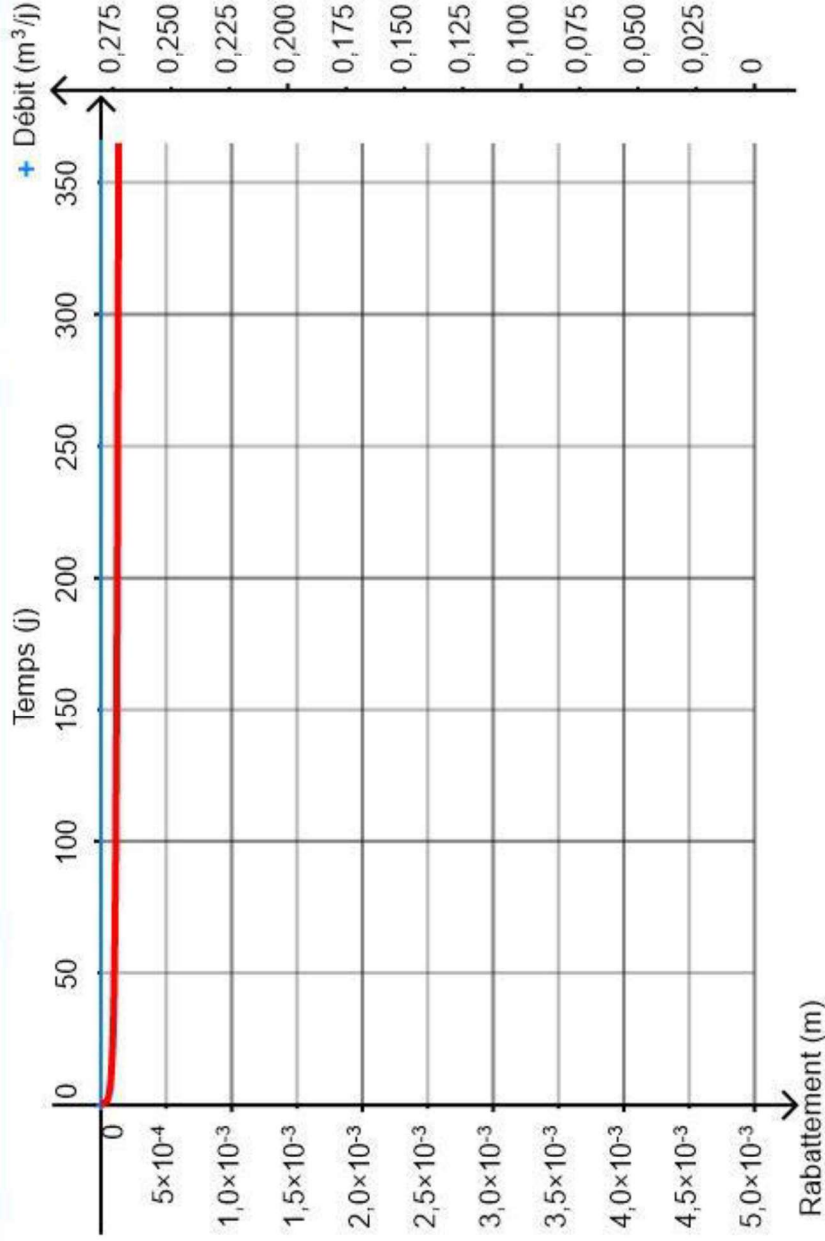
0 2 500 5 000 m



Rabatement de la nappe au niveau de la zone humide la plus proche (75 m)

Type d'ouvrage Puits

Rayon d'observation 75 m



Légende	
+	Débit
—	Courbe théorique
Simulation à l'aide de la solution	
Type aquifère de la solution	
Transmissivité	
Coefficient d'emmagasinement	
	Theis, 1935
	Captif
	$1,60 \times 10^{-2} \text{ m}^2/\text{s}$
	$5,00 \times 10^{-2} (-)$

Rabatement de la nappe au niveau du forage avoisinant (140 m)

Type d'ouvrage Puits

Rayon d'observation 140 m

