

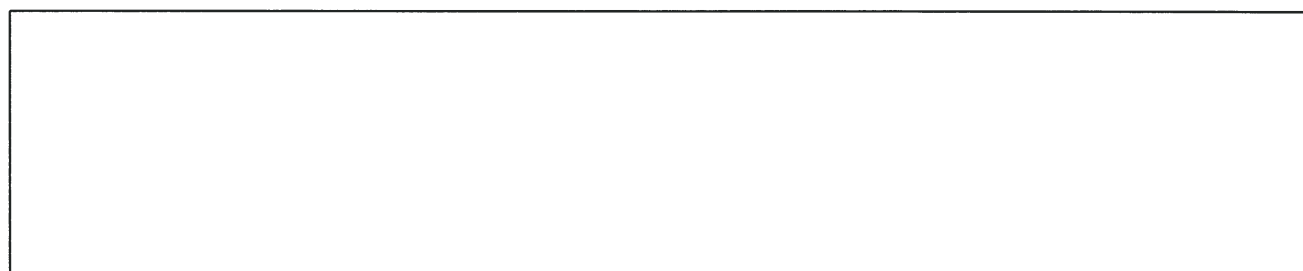


Plan de situation 1/4264



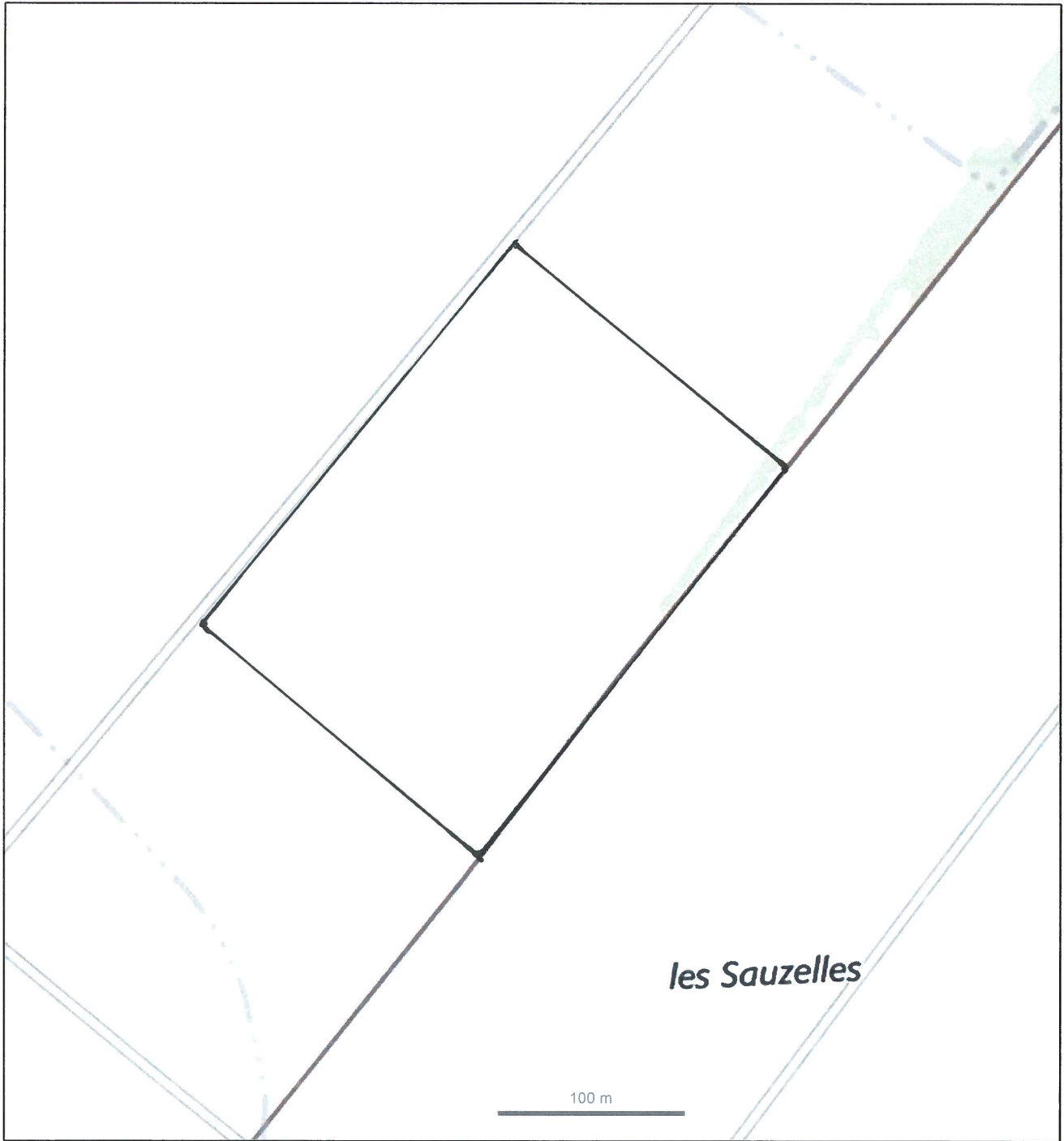
© IGN 2019 - www.geoportail.gouv.fr/mentions-legales

Longitude : 0° 50' 13" W
Latitude : 46° 25' 01" N



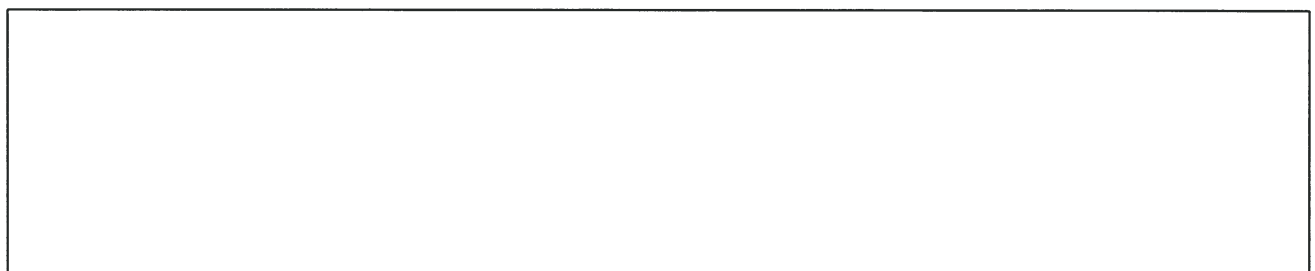


Plan de situation 1/4264



© IGN 2019 - www.geoportail.gouv.fr/mentions-legales

Longitude : 0° 50' 13" W
Latitude : 46° 25' 01" N



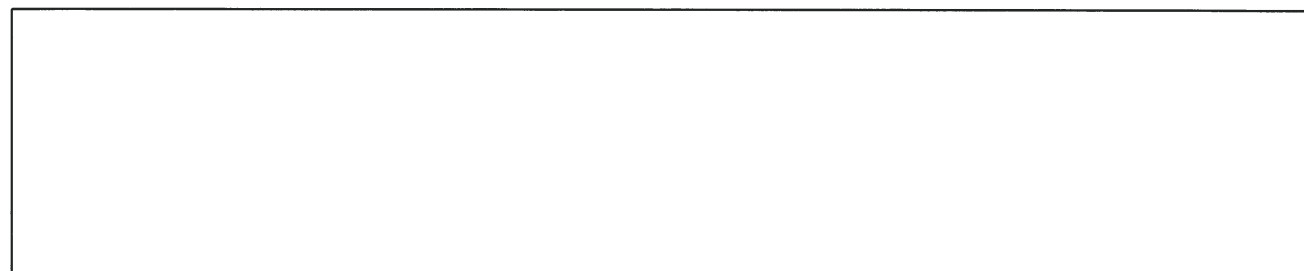


Plan de situation 1/17055

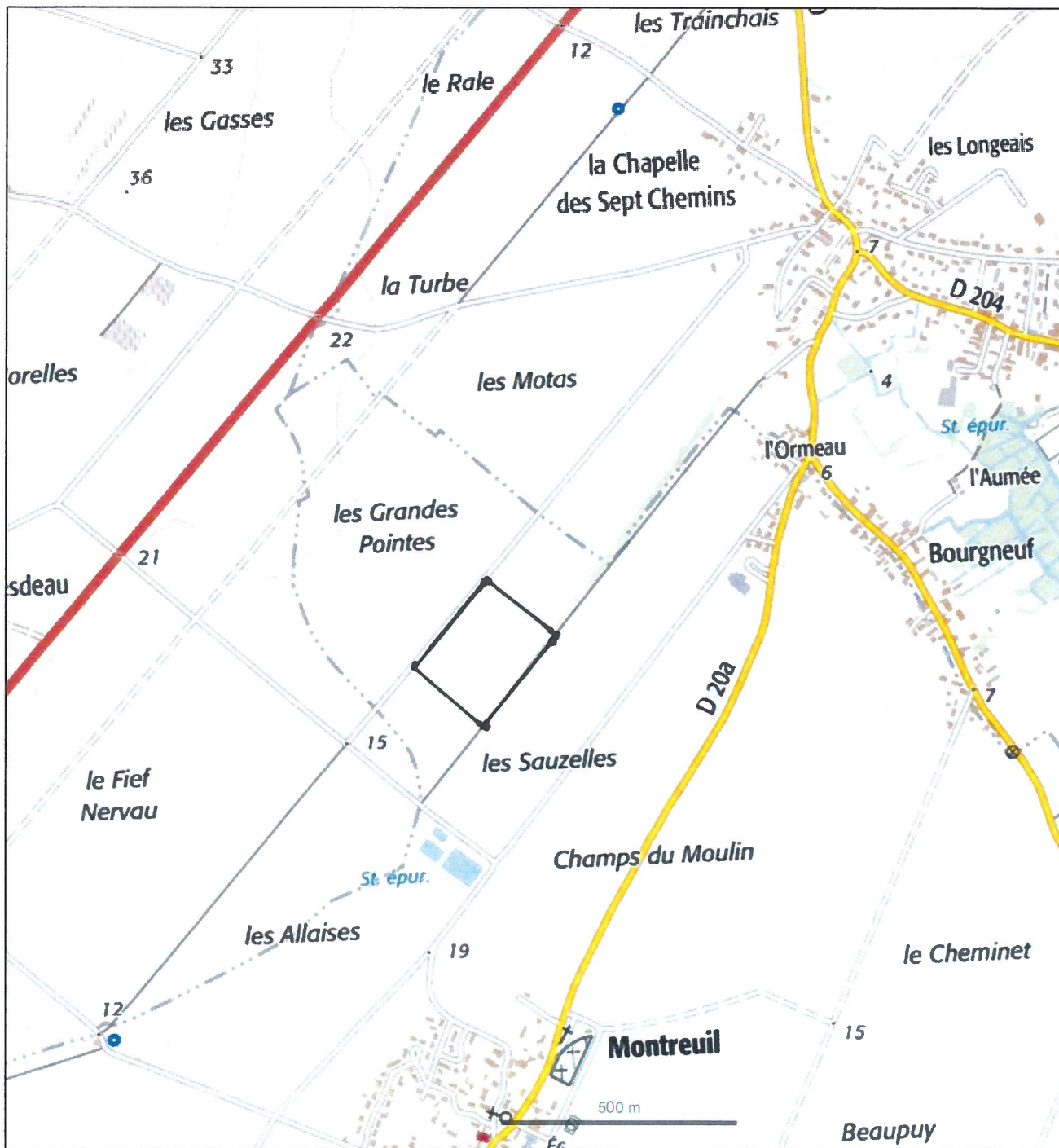


© IGN 2019 - www.geoportail.gouv.fr/mentions-legales

Longitude : 0° 50' 09" W
Latitude : 46° 25' 06" N

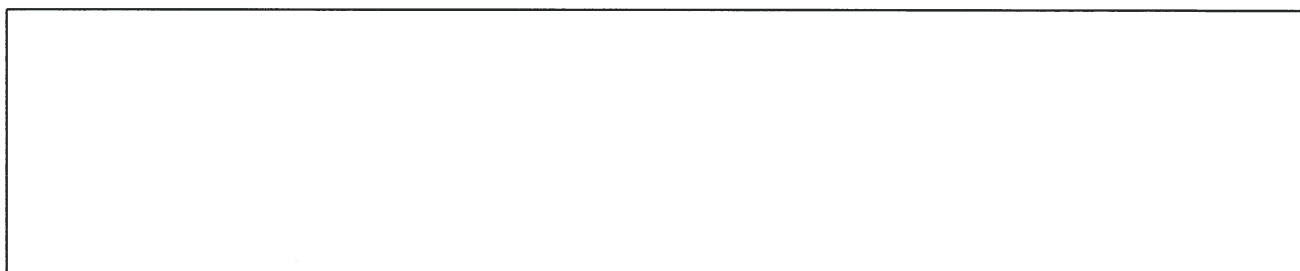


Plan de situation 1/17055

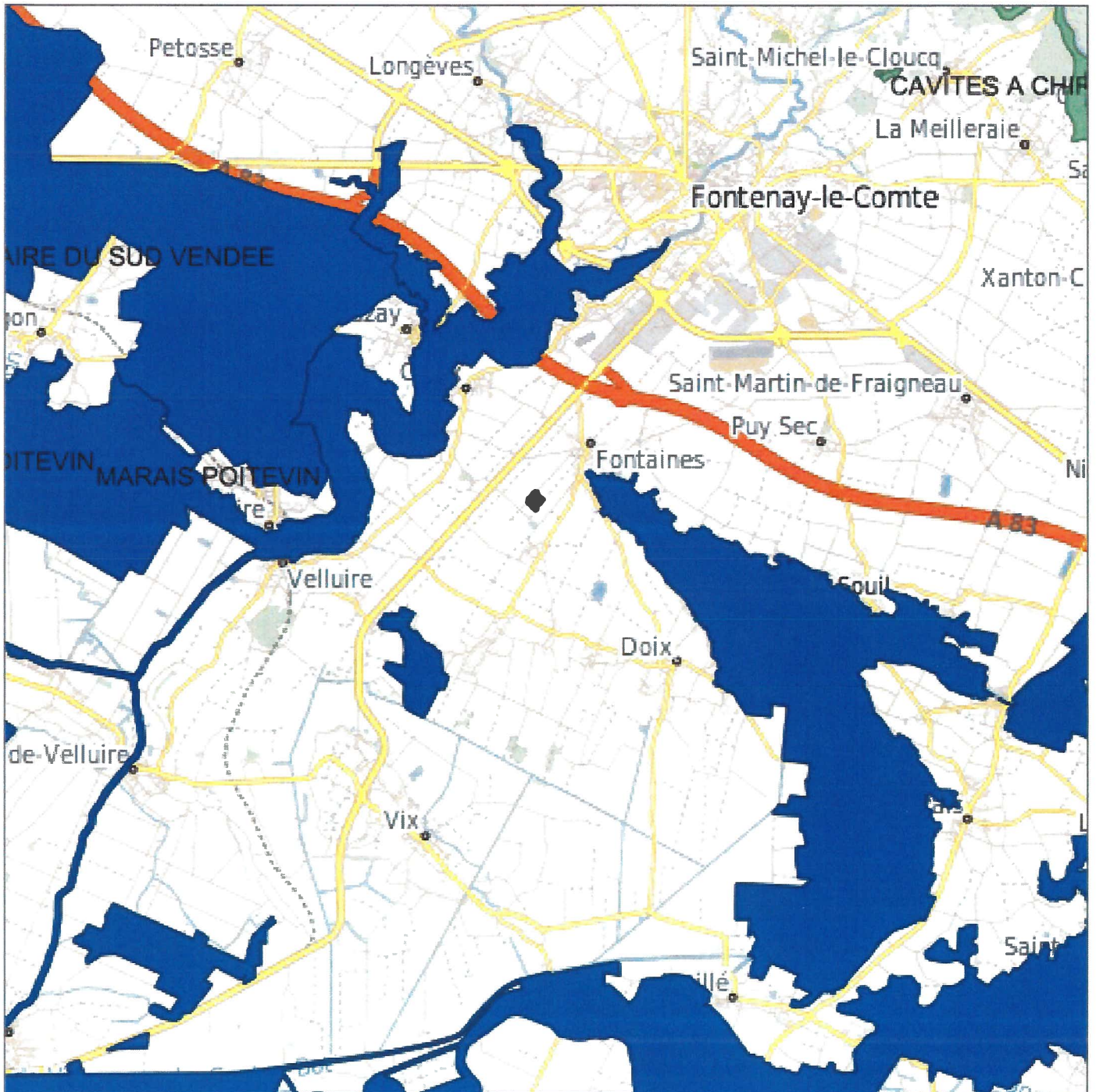


© IGN 2019 - www.geoportail.gouv.fr/mentions-legales

Longitude : 0° 50' 09" W
 Latitude : 46° 25' 06" N



Sites Natura 2000 en Pays de la Loire

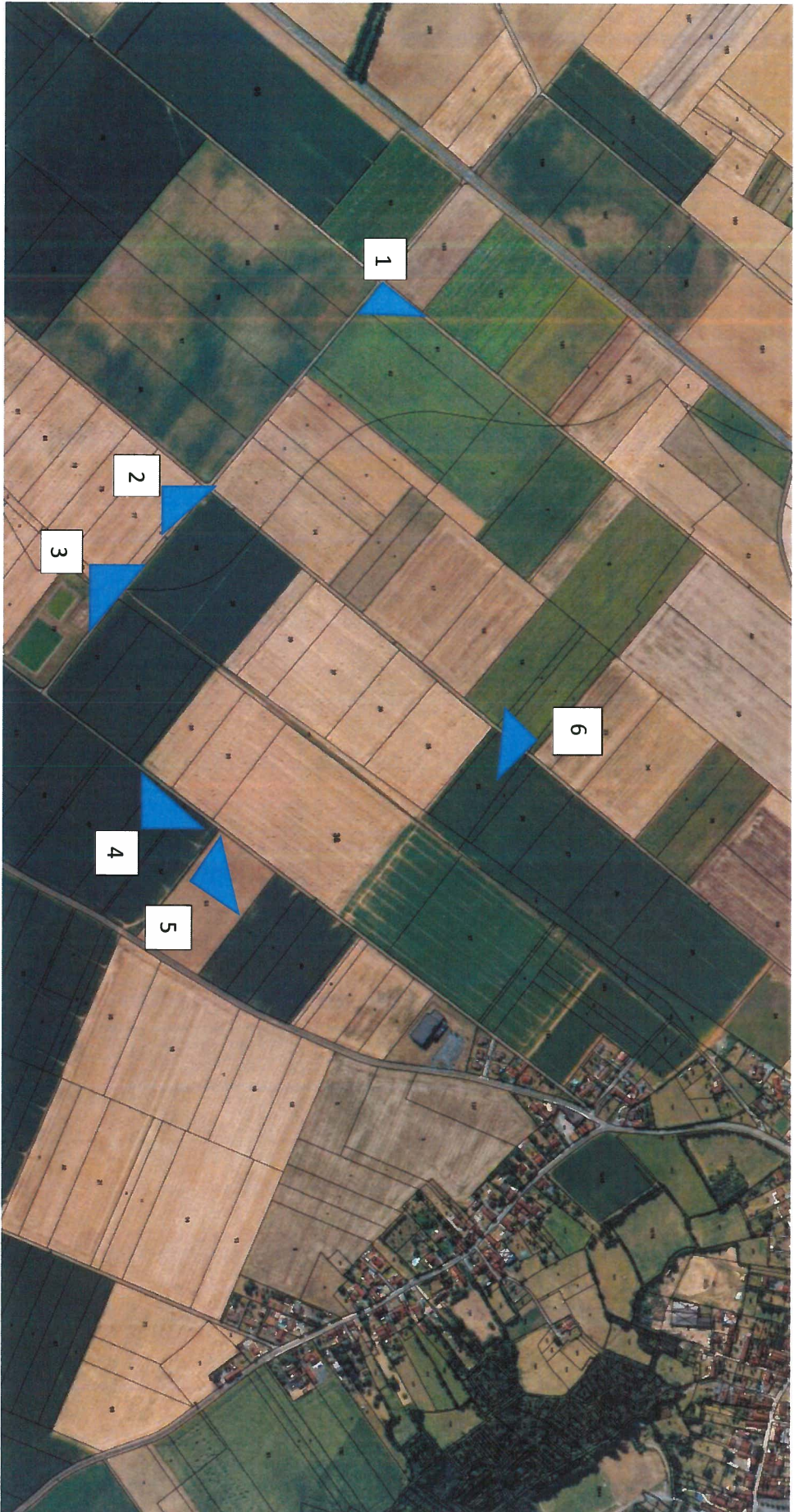


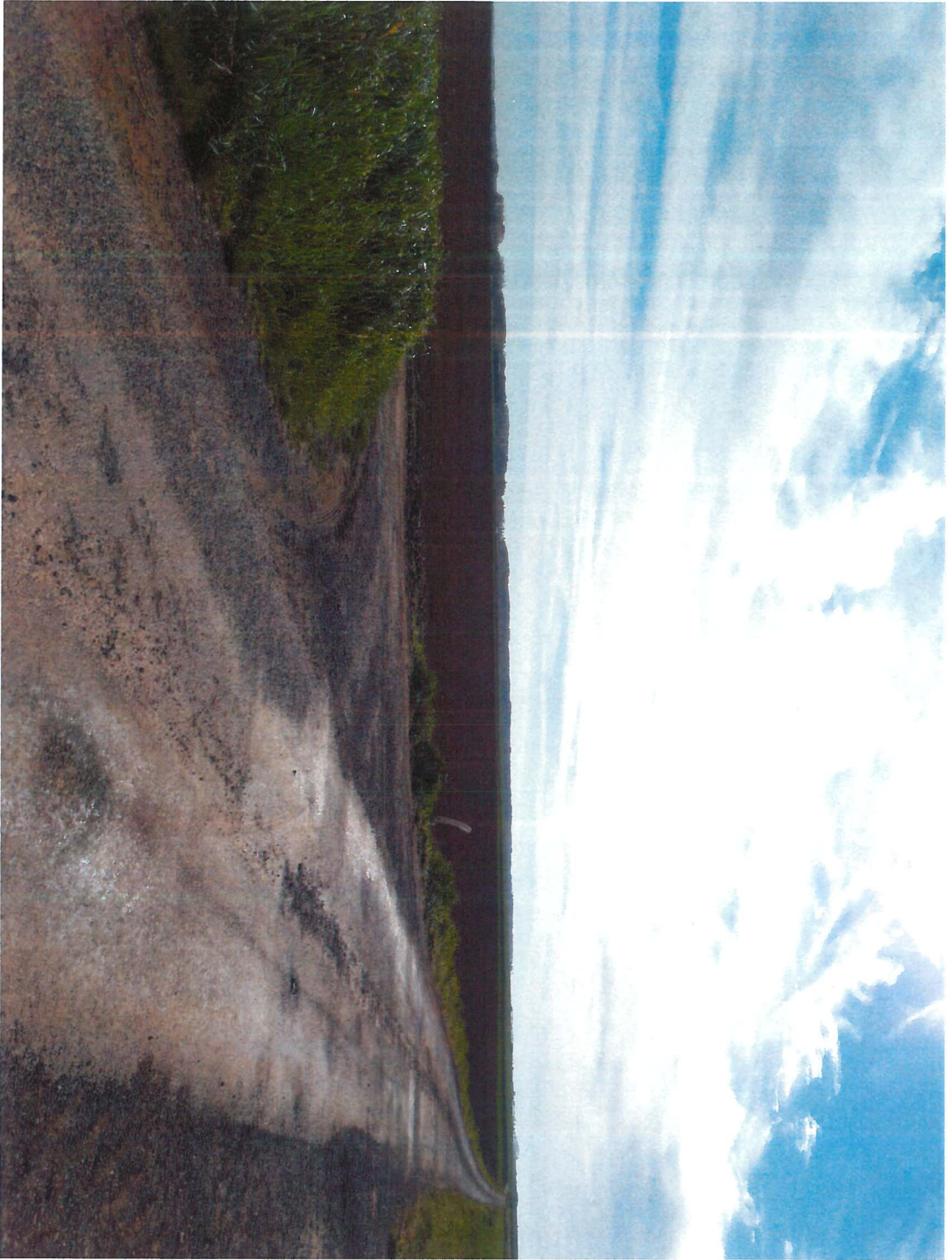
Source : Sources : DREAL Pays de la Loire, IGN ADMIN EXPRESS®, IGN BD ORTHO®, février 2019.

Lien : https://carto.sigloire.fr/1/r_natura_2000_r52.map

Date : 5 Avril 2019







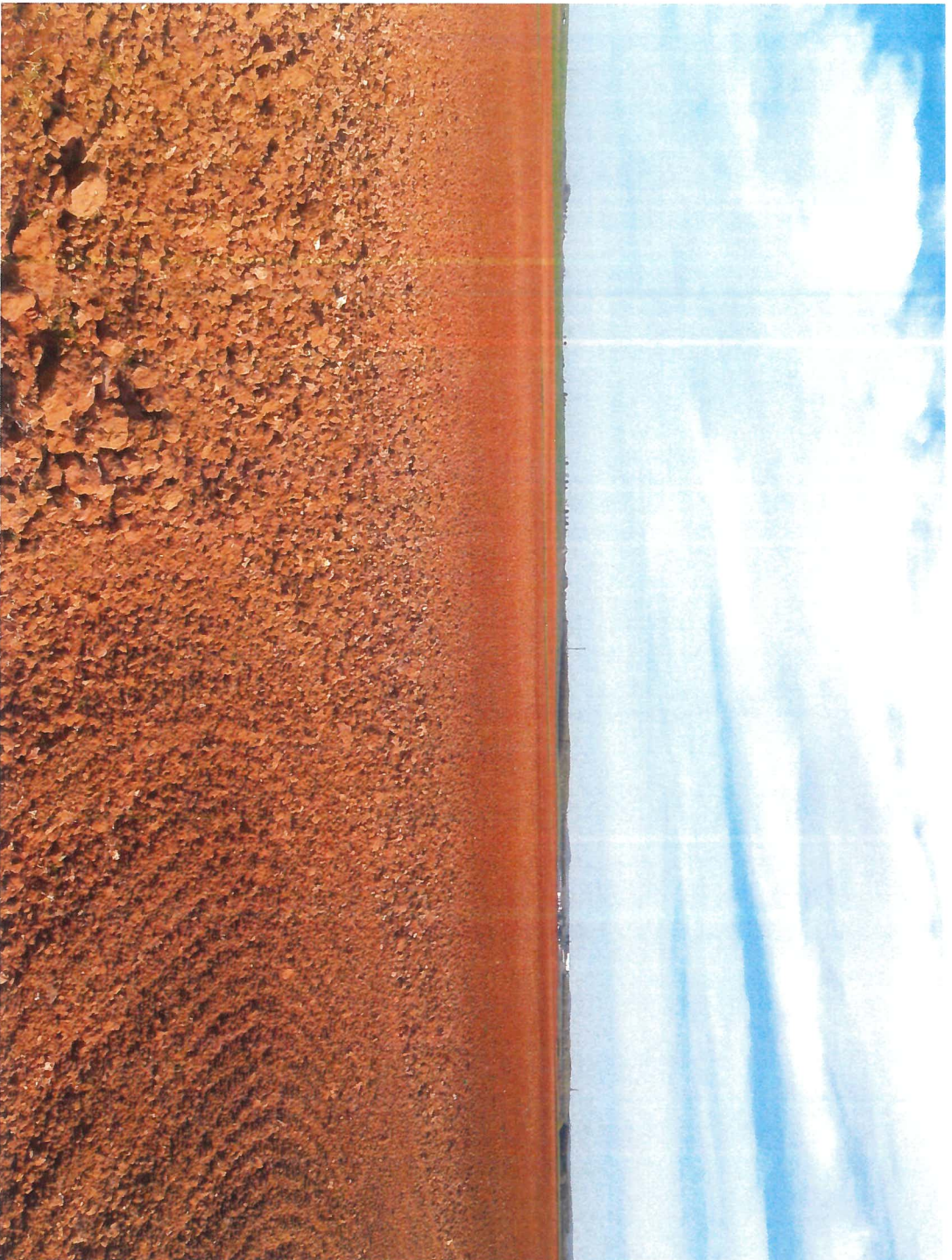
Prise de vue 1.



Prise de vue 2.



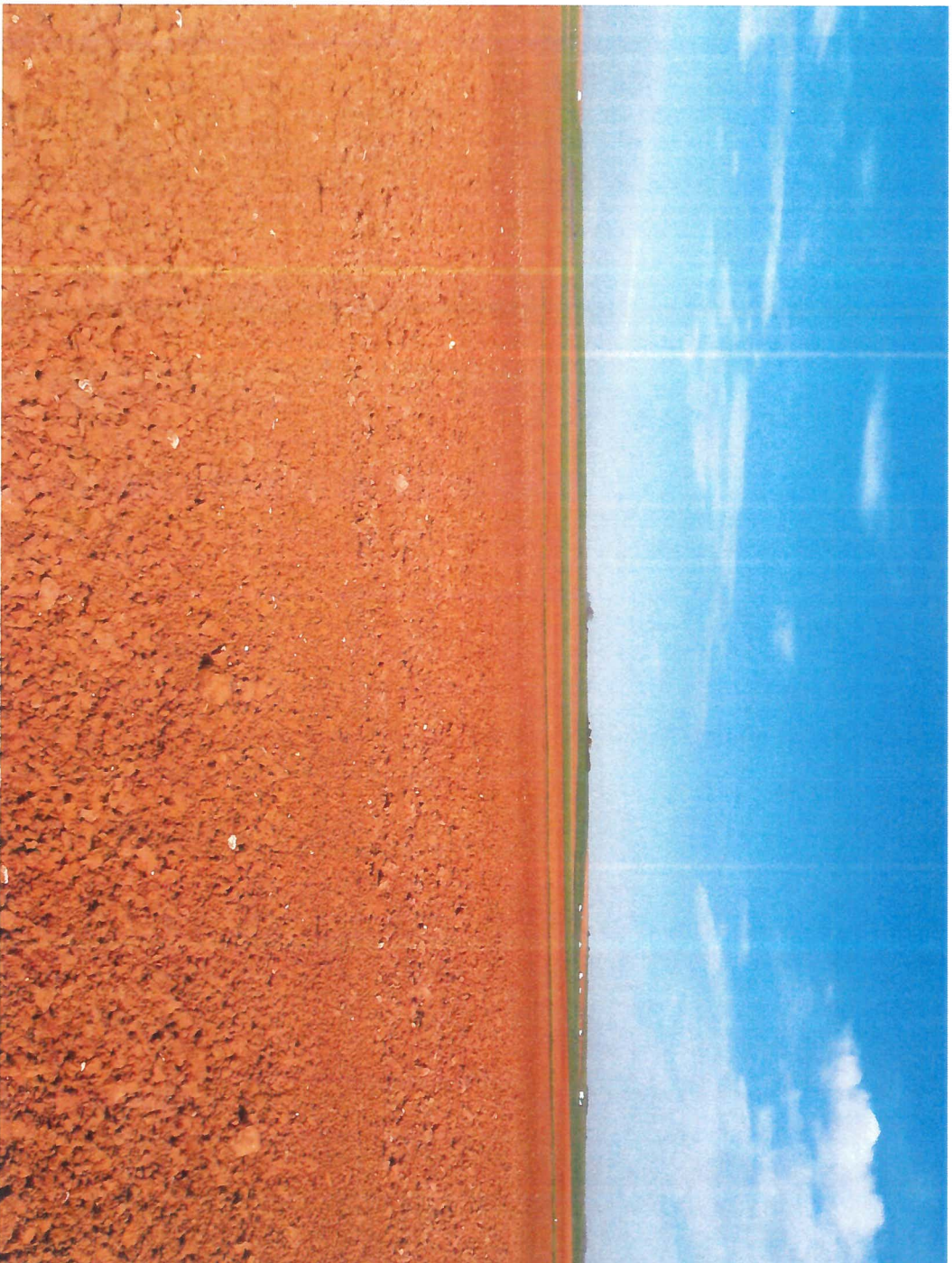
Prise de vue 3.



Prise de vue 5.



Prise de vue 6.



Prise de vue 4.