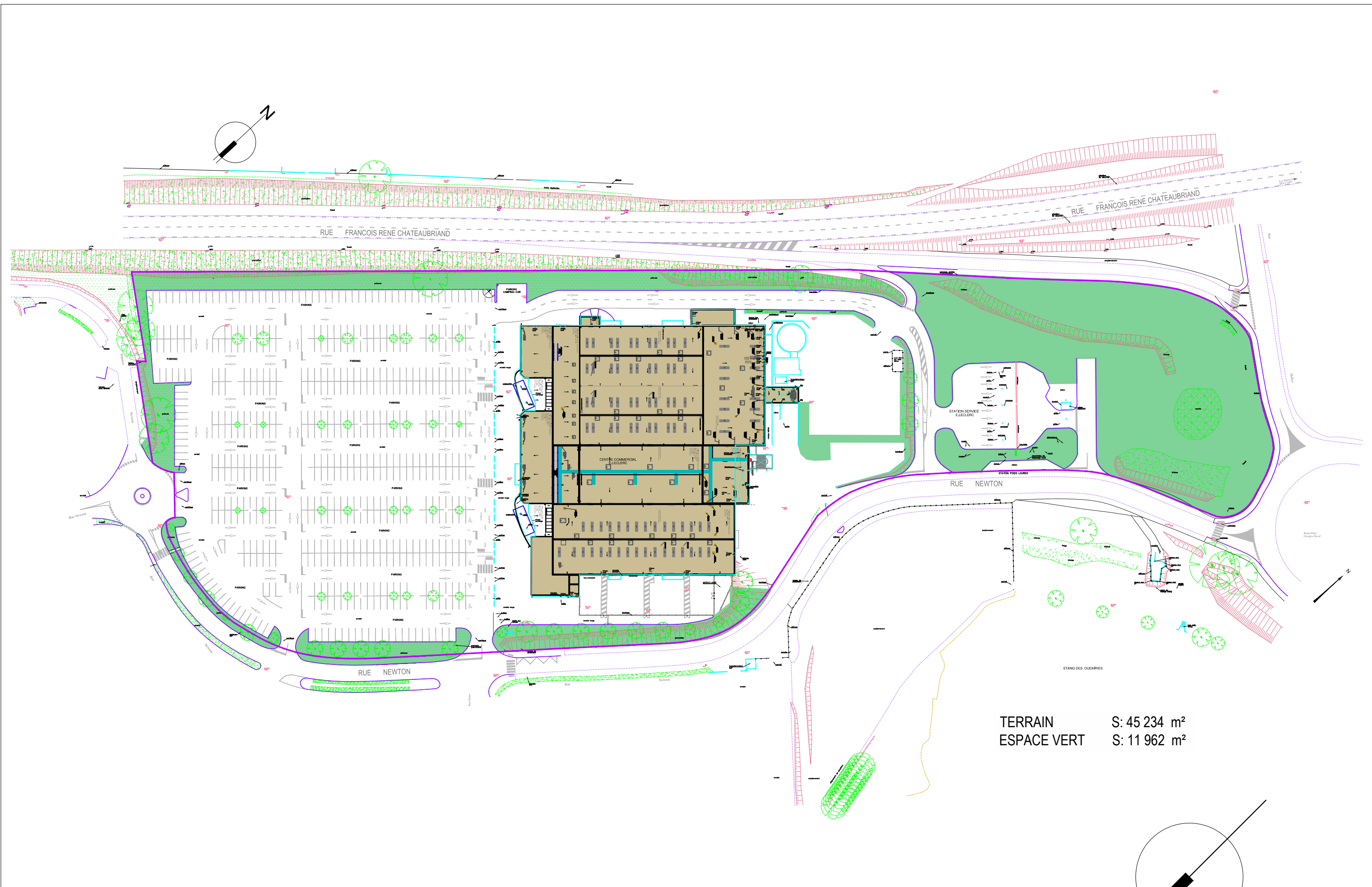




CODE	PHASE	DES	VRF	DATE	ECHELLE	NUMERO	INDICE
2007-005	DPC	AA		29/04/14	-	307	-

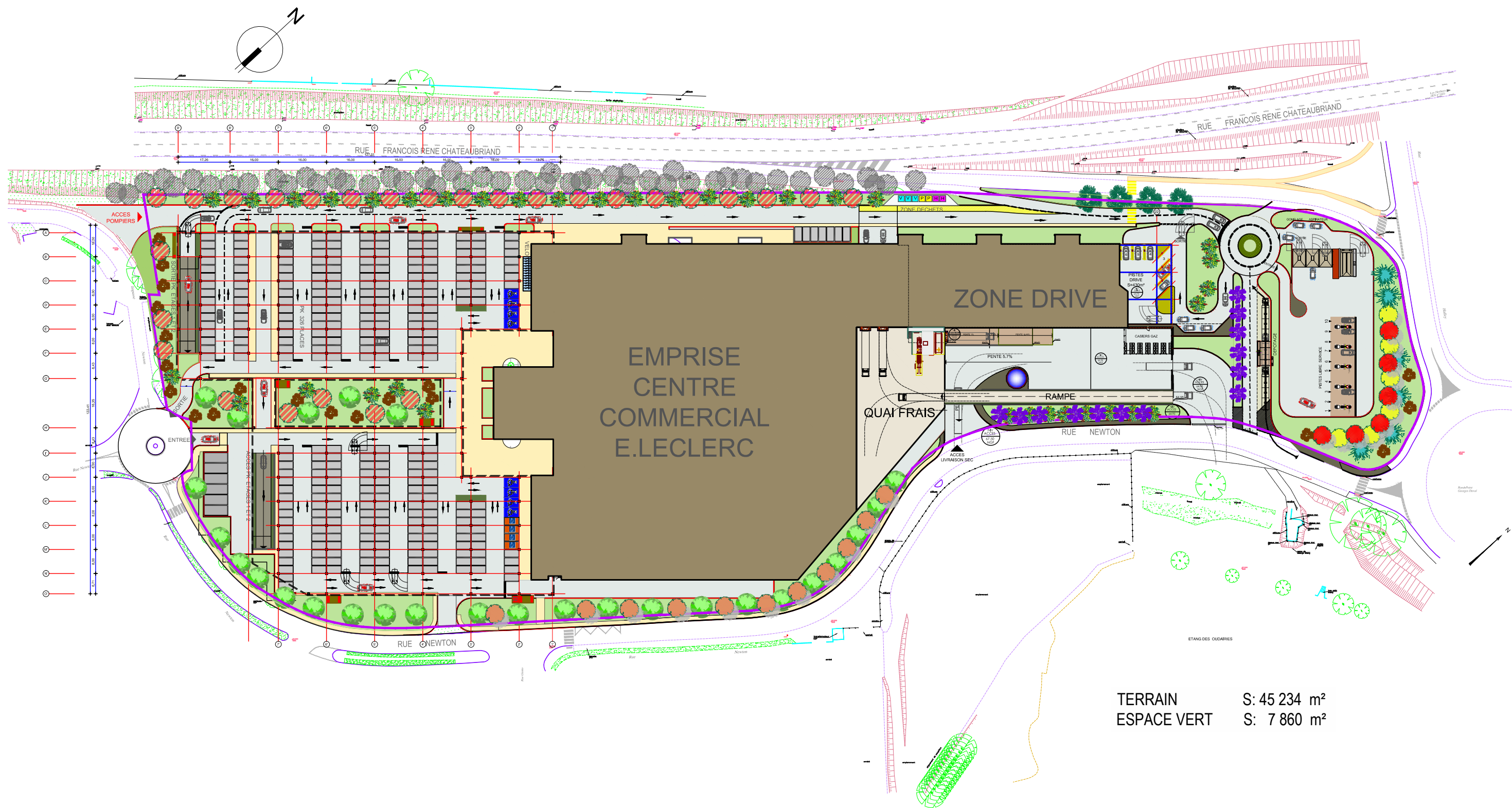


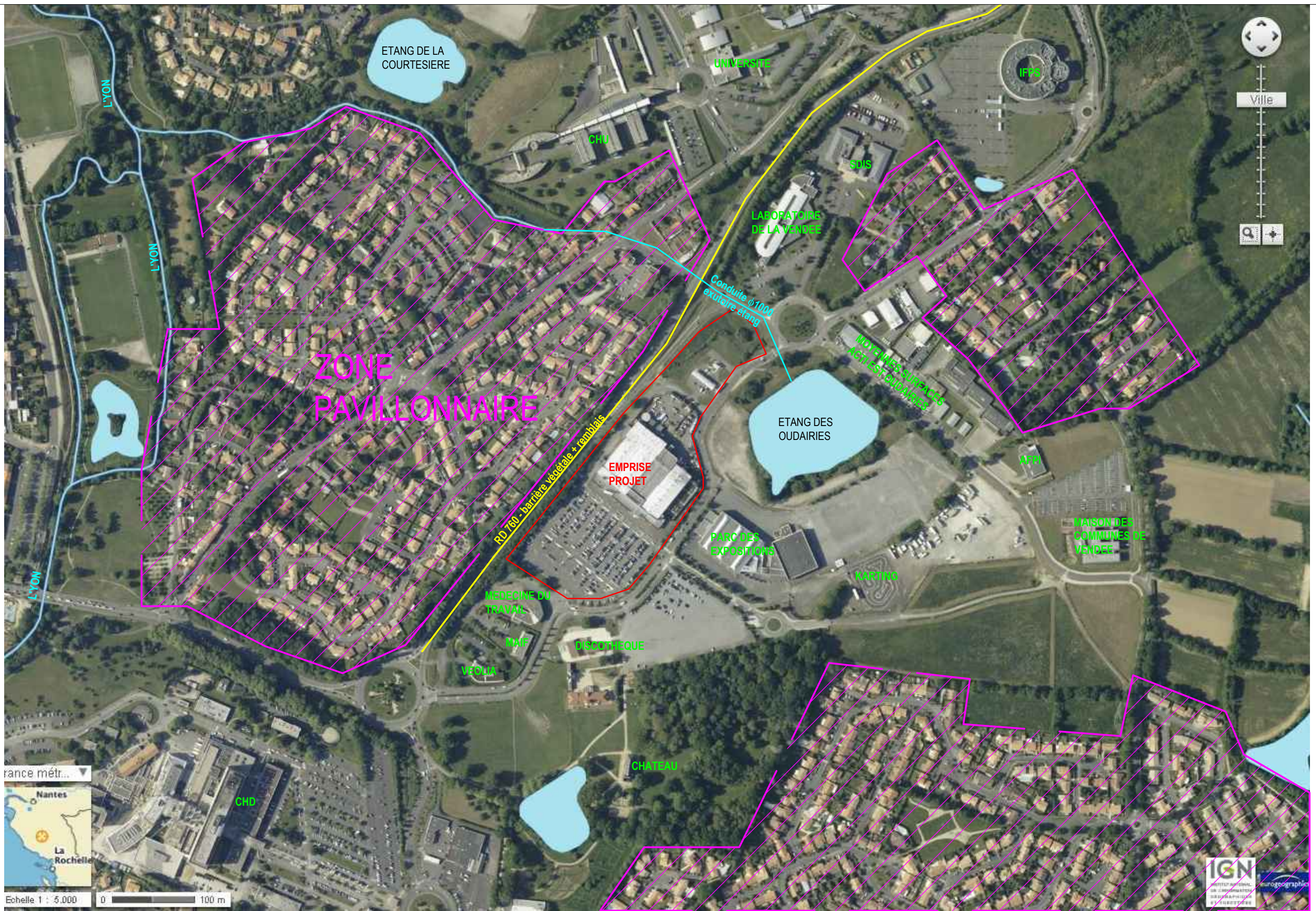
CODE	PHASE	DES	VRF	DATE	ECHELLE	NUMERO	INDICE
2007-005	DPC	AA		29/04/14	-	308	-



TERRAIN S: 45 234 m²
 ESPACE VERT S: 11 962 m²

CODE	PHASE	DES	VRF	DATE	ECHELLE	NUMERO	INDICE
2007-005	DPC	AA		29/04/14	-	401	-



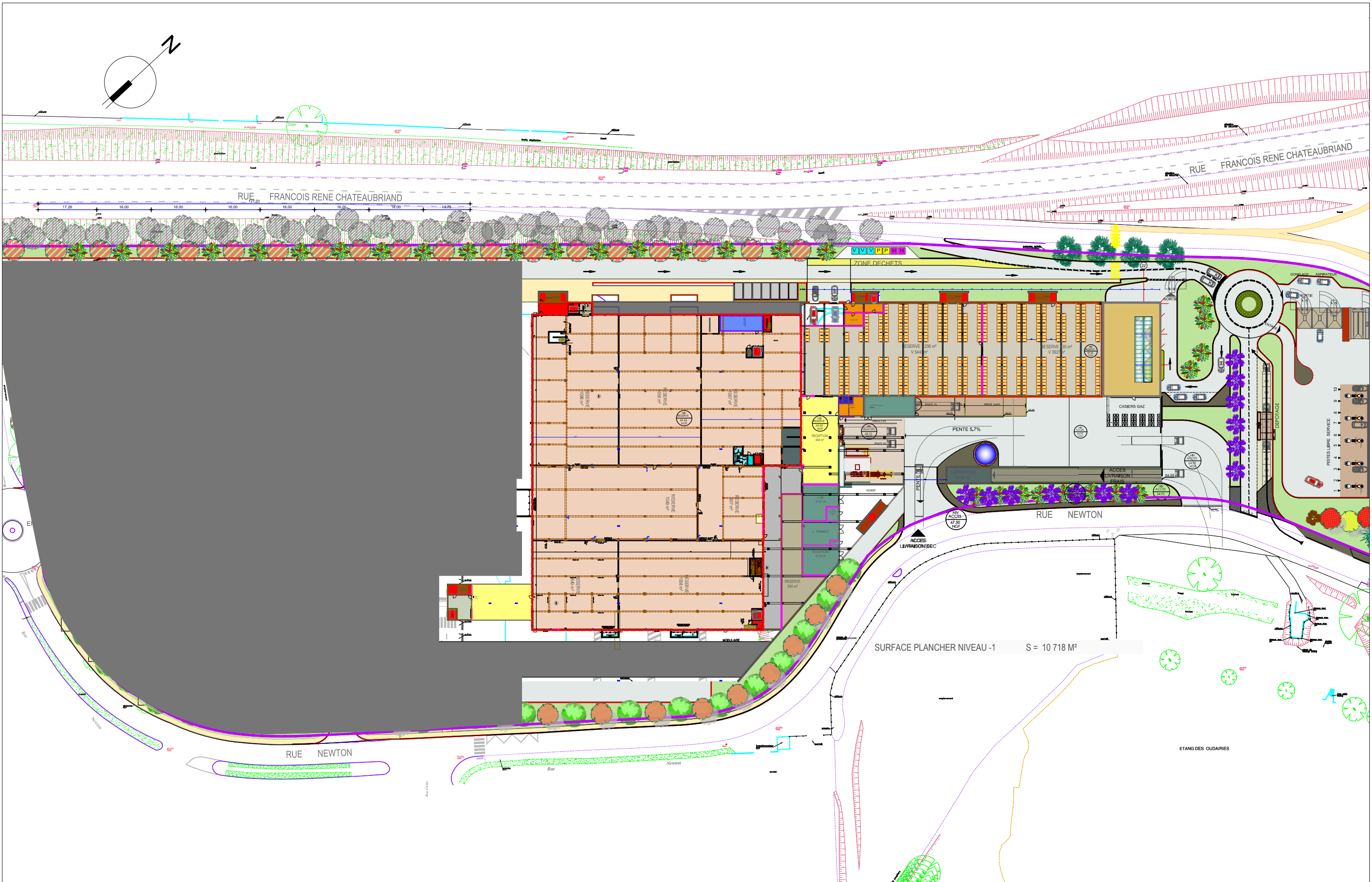


EXTENSION ET RESTRUCTURATION DU CENTRE COMMERCIAL LECLERC A LA ROCHE SUR YON
 ANNEXE 5
 Plan des abords du projet (photo aérienne IGN, année 2010)

CODE	PHASE	DES	VRF	DATE	EHELLE	NUMERO	INDICE
2007-005	DPC	AA		29/04/14	1/5000	501	-

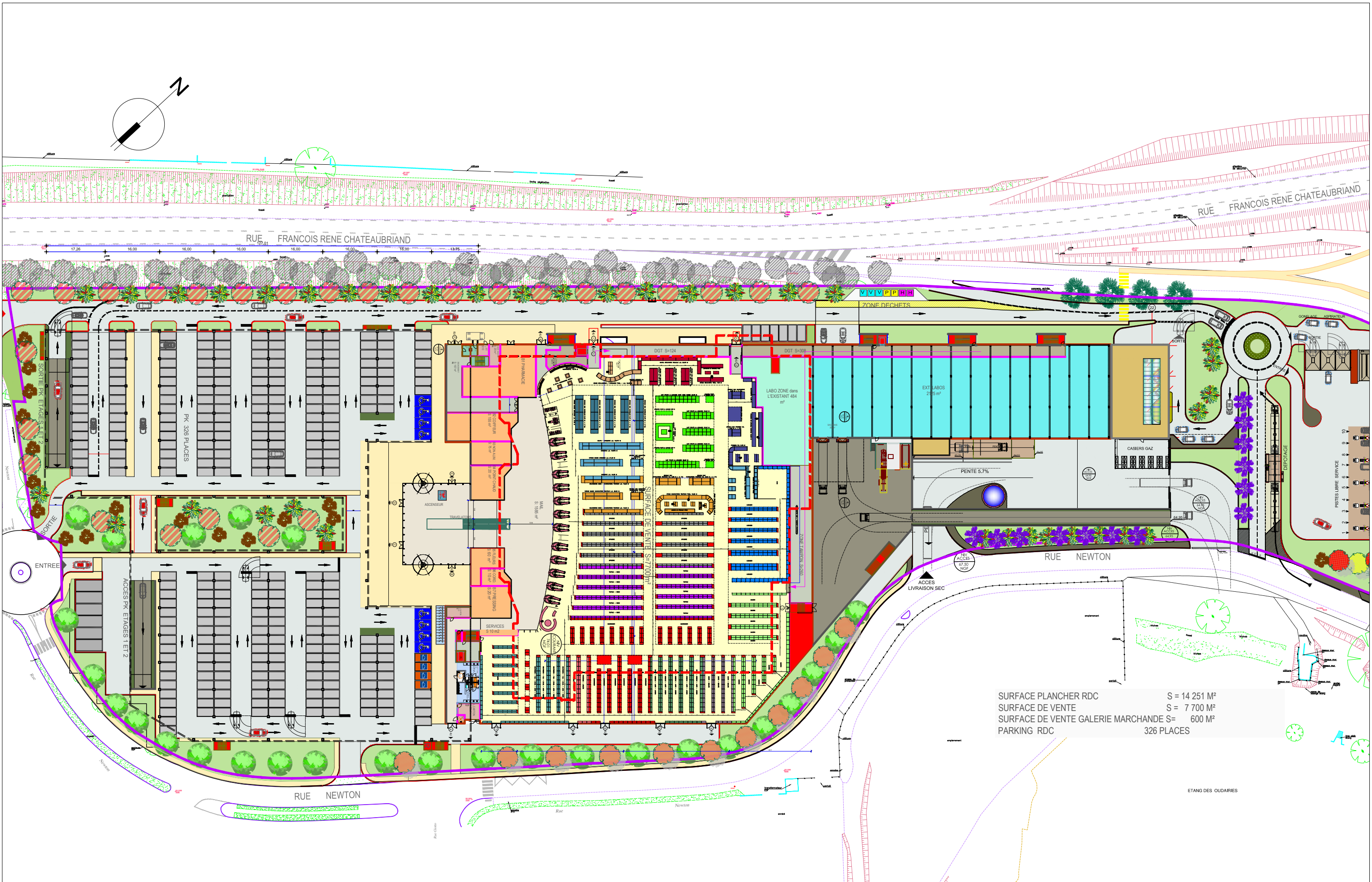


CODE	PHASE	DES	VRF	DATE	ECHELLE	NUMERO	INDICE
2007-005	DPC	AA		29/04/14	1/1000	601	-



EXTENSION ET RESTRUCTURATION DU CENTRE COMMERCIAL LECLERC A LA ROCHE SUR YON
ANNEXE 6
 Plan du sous-sol

CODE	PHASE	DES	VRF	DATE	ECHELLE	NUMERO	INDICE
2007-005	DPC	AA		29/04/14	1/1000	602	-

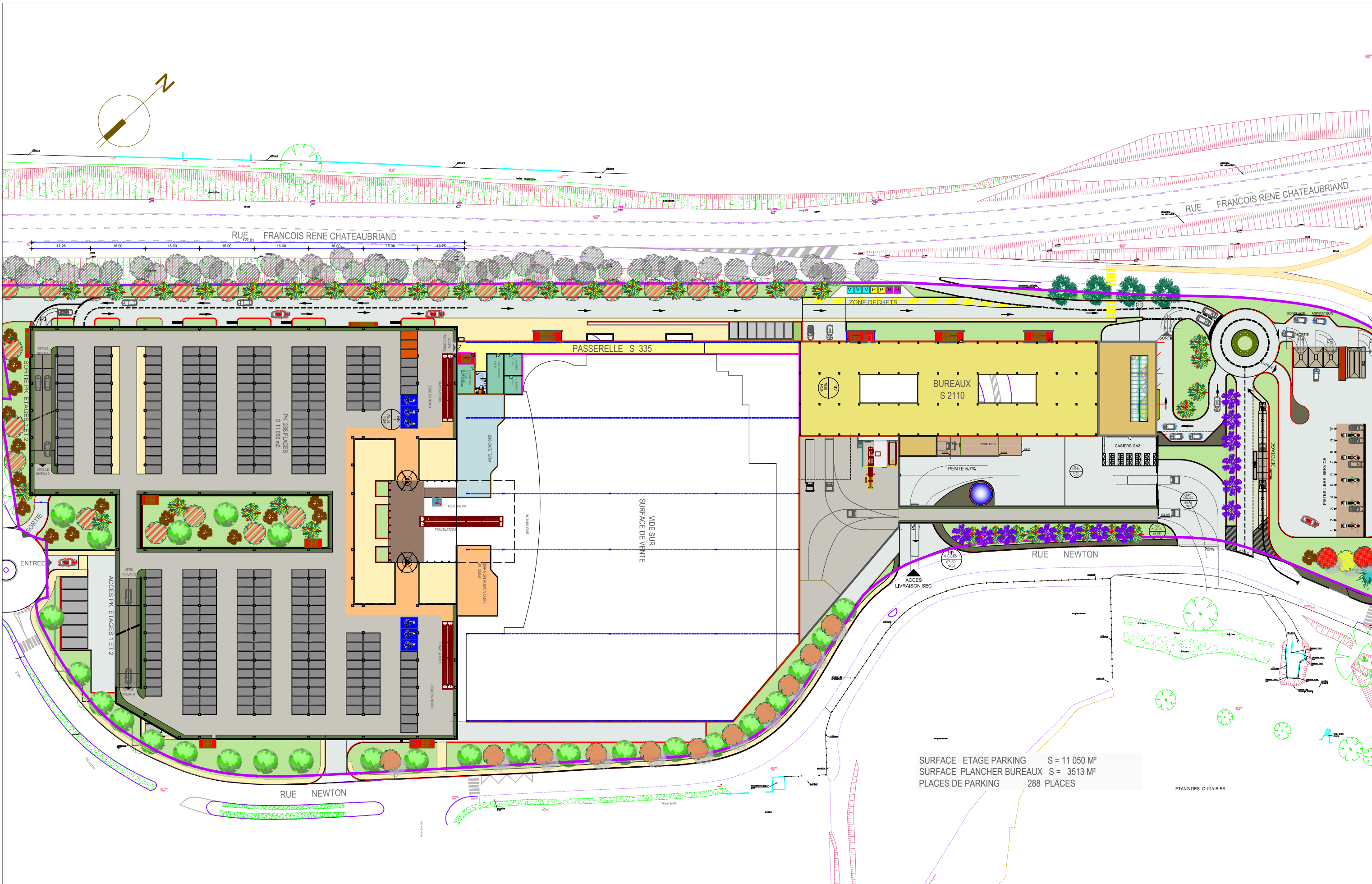
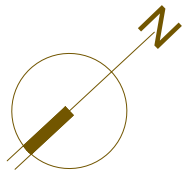


SURFACE PLANCHER RDC S = 14 251 M²
 SURFACE DE VENTE S = 7 700 M²
 SURFACE DE VENTE GALERIE MARCHANDE S = 600 M²
 PARKING RDC 326 PLACES



EXTENSION ET RESTRUCTURATION DU CENTRE COMMERCIAL LECLERC A LA ROCHE SUR YON
 ANNEXE 6
 Plan du RDC

CODE	PHASE	DES	VRF	DATE	ECHELLE	NUMERO	INDICE
2007-005	DPC	AA		29/04/14	1/1000	603	-



SURFACE ETAGE PARKING S = 11 050 M²
 SURFACE PLANCHER BUREAUX S = 3513 M²
 PLACES DE PARKING 288 PLACES



EXTENSION ET RESTRUCTURATION DU CENTRE COMMERCIAL LECLERC A LA ROCHE SUR YON
ANNEXE 6
 Plan du R+1

CODE	PHASE	DES	VRF	DATE	ECHELLE	NUMERO	INDICE
2007-005	DPC	AA		29/04/14	1/1000	604	-

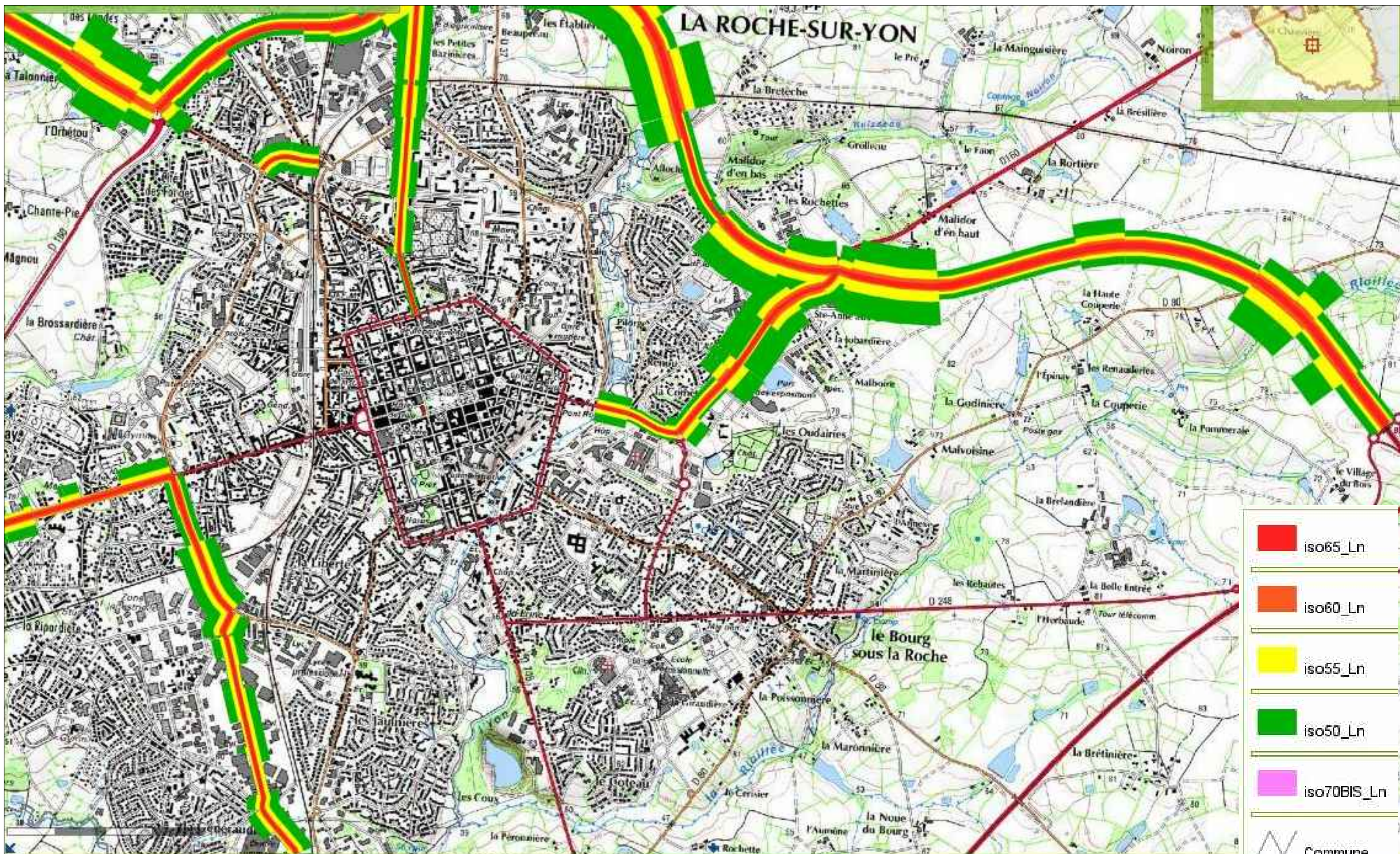


EMPRISE BATIMENT S = 29 037 M²
 SURFACE ETAGE PARKING S = 11 114 M²
 PLACES DE PARKING R+2 = 293



EXTENSION ET RESTRUCTURATION DU CENTRE COMMERCIAL LECLERC A LA ROCHE SUR YON
 ANNEXE 6
 Plan du R+1

CODE	PHASE	DES	VRF	DATE	ECHELLE	NUMERO	INDICE
2007-005	DPC	AA		29/04/14	1/1000	605	-



CODE	PHASE	DES	VRF	DATE	ECHELLE	NUMERO	INDICE
2007-005	DPC	AA		29/04/14	-	606	-